



2022 - 2026



FIVE-YEAR PARKS AND RECREATION MASTER PLAN



ACKNOWLEDGEMENTS

VILLAGE COUNCIL

Steve Lutke – Village President
Colleen Christensen -President Pro-Tem
Karl Bahle
Will Case
Mike Long
Debra Smith
Roger Suppes

PLANNING COMMISSION

Gail Hetler – Chairperson
Frank Smith – Vice Chair
Jared Pontius – Secretary
Steve Feringa
Richard Hylwa
Pete Ostrowski
Roger Suppes

PARKS & RECREATION SUB-COMMITTEE

Gail Hetler
Richard Hylwa
Pete Ostrowski

STAFF

Rob Larrea, AICP – Village Manager
Dorothy Petroskey – Office Assistant

INTRODUCTION

The Village of Suttons Bay has developed this 5-year Parks and Recreation Master Plan after undertaking a thorough process of inventory, analysis, and public input collection. This plan is a road map for the parks and recreation decisions to be made over the next five years. It will identify new and evolving areas of focus and provide recommendations to address gaps in the existing park system. This plan also makes the Village eligible for grant programs administered by the Michigan Department of Natural Resources (MDNR). The process of preparing the plan has given the Village a better understanding of its residents' needs and desires for parks and recreation. The plan contains the following components:

- Community Description
- Administrative Structure and Funding
- Recreation Inventory
- Description of the Planning and Public Input Process
- Goals and Objectives
- System Wide Recommendations
- Action Plan

COMMUNITY DESCRIPTION

The Community Description is simply intended to describe the jurisdiction and focus of the recreation plan. This section does not include a report of the social and physical characteristics of the community, which are included later in the plan to describe how these factors relate to the goals and objectives that have been developed.

ADMINISTRATIVE STRUCTURE AND FUNDING

The Administrative Structure and Funding section contains a description and illustration of the Village's parks and recreation organization. The current and projected expenditures are discussed in this section. Additionally, this section discusses the Village's Michigan Natural Resources Trust Fund grant history, and describes recreation partnerships and other recreation providers.

RECREATION INVENTORY

The Recreation Inventory is a compilation of all Village, local, regional, and private parks and recreation facilities that are understood to be commonly used by Village residents. Although extensive, it is not intended as an exhaustive inventory of every individual park in the region. This section also includes descriptions of the park facility classification system that was used to describe the park system. An accessibility analysis for Village-owned properties is provided in this section. Maps that show the locations of the parks and recreation areas are provided near the end of this plan.

DESCRIPTION OF THE PLANNING AND PUBLIC INPUT PROCESS

This section outlines the methods that were used to assess the community's parks and recreation, needs. Community engagement is a critical and ongoing part of this plan. Emphasis on creating a balanced, open, and collaborative engagement process was key to the creation of the plan as was the deliberate inclusion of all demographics, which resulted in a community-wide trust in the plan.

GOALS AND OBJECTIVES

This section begins with a Basis for Goals and Objectives discussion, including the various factors that led to the formation of the goals and objectives, such as **natural and manmade features, demographic characteristics, and the recreation inventory analysis**. Following this discussion, a number of Goals and Objectives are presented, starting with a broader Goal, and then identifying a number of narrower Objectives that the Village should pursue to help reach its Goal. The results presented in this section create the basis for the **System Wide Recommendations** and **Park System Action Plan**.

RECOMMENDATIONS

This discussion begins with the **System Wide Recommendations** section, which highlights five overarching considerations that should be pursued over the life of this plan. This section also includes a summary of **Park-Specific Recommendations**, which are not developed to the point of individual site development plans, but rather outline the current understanding of park functions, opportunities, and challenges.

PARK SYSTEM ACTION PLAN

The Action Plan is the result of the information gathered and analyzed through the planning process. The projects identified in the Action Plan identify those that are intended to bring our parks up to an expected standard and how the Village intends to meet or work towards meeting the Goals and Objectives over the next five years.

TABLE OF CONTENTS

- COMMUNITY DESCRIPTION 1
- PLAN JURISDICTION AND FOCUS 1

ADMINISTRATIVE STRUCTURE AND FUNDING

- ADMINISTRATIVE STRUCTURE 2
- SOURCES OF FUNDING AND PARKS AND RECREATION BUDGET ... 3
- PARTNERSHIPS AND OTHER RECREATION PROVIDERS..... 4
- NON-VILLAGE RECREATIONAL PARTNERS 5
- NATURAL RESOURCES TRUST FUND GRANT HISTORY 6

RECREATION INVENTORY

- INTRODUCTION 7
- PARK FACILITY CLASSIFICATIONS 7
- ACCESSIBILITY ANALYSIS STANDARDS 9
- PARK AND RECREATION AREA INVENTORY 10
- PARK AND RECREATION AREA DESCRIPTIONS 16
- RECREATION BOATING FACILITIES 22
- COUNTY WIDE DNR ACCESS SITES 23

DESCRIPTION OF THE PLANNING AND PUBLIC INPUT PROCESS

- PLANNING PROCESS 24
- PUBLIC INPUT 24

BASIS FOR GOALS AND OBJECTIVES..... 25

- DEMOGRAPHIC CHARACTERISTICS 25
- PHYSICAL NATURAL FEATURES..... 26
- INVASIVE SPECIES 26
- SIGNIFICANT MANMADE FEATURES 27
- SCENIC HERITAGE ROUTE 27
- TRAILS- LEELANAU / US BIKE ROUTE 35 28
- PUBLIC INVOLVEMENT 29
- SURVEY RESULTS 29
- INVENTORY ANALYSIS -COMPARISON TO GUIDELINES.... 30

GOALS AND OBJECTIVES 31

RECOMMENDATIONS

- SYSTEM WIDE RECOMMENDATIONS 33
- PARK-SPECIFIC RECOMMENDATIONS 34
- DEVELOPMENT PLAN DESCRIPTIONS 40
- COMMUNITY RECREATION ACTION PLAN 43

FIGURES

ADMINISTRATIVE STRUCTURE FIGURE..... 2

TABLES

1. RECREATION BUDGET 3
2. PARKS AND RECREATION INVENTORY 10
3. INVENTORY ANALYSIS..... 30
4. PARK SYSTEM ACTION PLAN – 5 YEAR..... 43

IMAGES

REGIONAL LOCATION 1

COUNTY LOCATION 1

DNR BOATING ACCESS 23

LEELANAU TRAIL - VILLAGE OF SUTTONS BAY TO TC 28

MAP GALLERY 45

VILLAGE BOUNDARY MAP

VILLAGE PARK MAP WITH AMENITIES

NON-MOTORIZED-ROUTES

WETLAND

TOPOGRAPHY

SUTTON PARK PLAN

WATERWHEEL PARK PLAN

APPENDICES

APPENDIX A – PARKS AND RECREATION COMMUNITY SURVEY RESPONSE

APPENDIX B – SUTTONS BAY SCHOOLS SURVEY RESPONSES

APPENDIX C – TIME TABLE OF ADOPTION

COMMUNITY DESCRIPTION

This Five-Year Parks and Recreation Master Plan was prepared for the residents of our community, the Village of Suttons Bay, Leelanau County, which is in Michigan’s northwest Lower Peninsula. *See Map 1 – Regional Location Map*

The Village of Suttons Bay, situated on the eastern edge of Leelanau County, along the clear waters of Suttons Bay, offers a high quality of life for its 600+ residents and thousands of yearly tourists. Our small Village is known for its vibrant and historic downtown, public beaches, and recreational opportunities, both on land and water. A favorite stop for bicyclists, boaters, and foodies alike, we offer a walkable community with a high quality of life. Our Village is just minutes away from Peshawbestown, Northport, Glen Arbor, Leland and the Sleeping Bear Dunes.

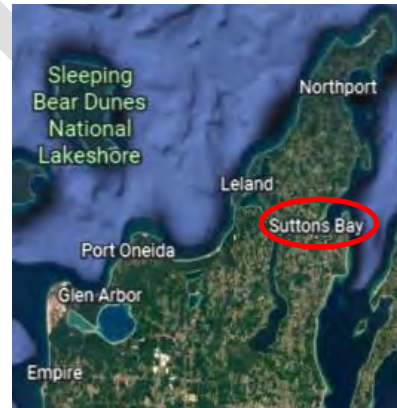


Map 1 – Regional Location

PLAN JURISDICTION AND FOCUS

This plan was prepared primarily for the use of the Village of Suttons Bay in evaluating current and future needs for active and passive recreation within its borders. Significant efforts have been made to coordinate this plan with the plans of surrounding municipalities, and with the plans of other recreation providers in the region, including Leelanau County, the Leelanau Conservancy, and Traverse Area Recreation and Transportation Trails, Inc (TART Trails) *See Map 2 – Leelanau County Map*

The plan is focused on all aspects of public recreation within the Village of Suttons Bay, including active recreation areas, passive recreation, and trailways.



Map 2 - Leelanau County

ADMINISTRATIVE STRUCTURE AND FUNDING

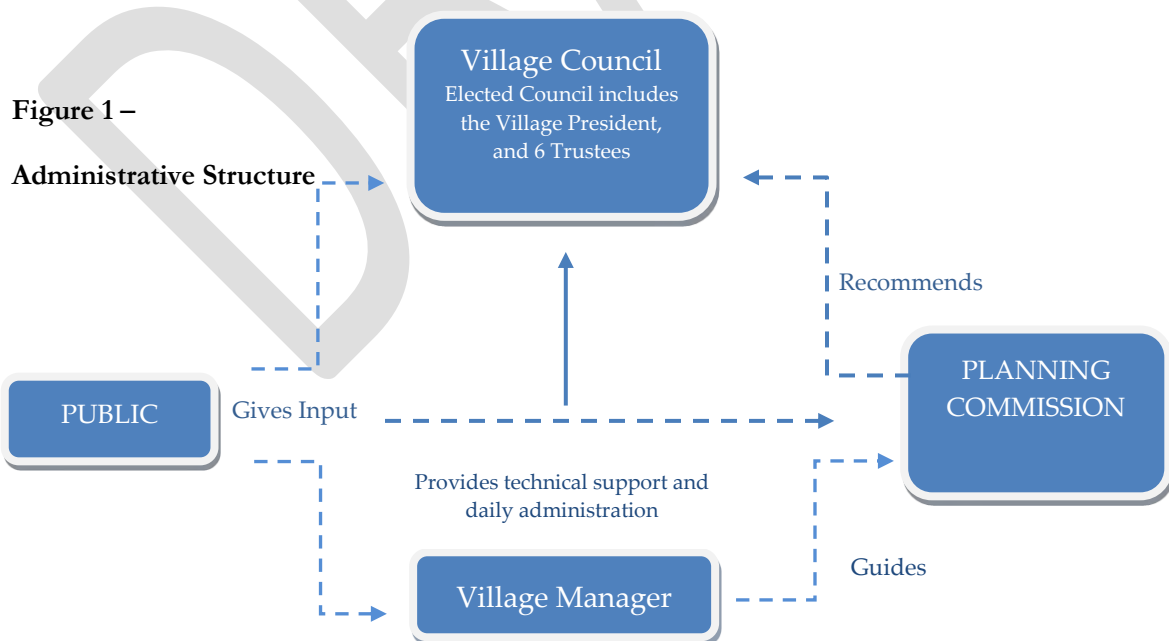
ADMINISTRATIVE STRUCTURE

The elected Village Council is ultimately responsible for recreation funding. The Village Council consists of seven members that are elected by the public. The Village does not have a Parks and Recreation department or Parks Commission, therefore, the seven-member Planning Commission provides the insight and guidance in the preparation of the Village Parks and Recreation Plan by way of a 3-member sub-committee. The administration and day-to-day management of recreational facilities is the responsibility of the Village Manager’s office. See “Figure 1 – Administrative Structure” below.

The specific duties of the Village Manager’s office as it relates to Parks and Recreation Plan include:

- Coordinate and maintain a Five-Year Parks and Recreation Master Plan
- Develop park-specific management plans
- Make annual recommendations regarding appropriate budgets for parks and recreation expenses
- Encourage public involvement and stewardship
- Prepare grant applications
- Work in partnership with other stakeholders

The Village does not currently provide formal recreational programming for its residents: those services are provided by other agencies, as further described beginning on Page 4 - “Recreational Partnerships and Other Recreation Providers.”



SOURCES OF FUNDING AND PARKS AND RECREATION BUDGET

The Village of Suttons Bay has historically budgeted funds on an annual basis for parks and park maintenance, which comes directly from the Village General Fund. Past uses of funds have been mostly directed to wages, park maintenance and non-traditional projects such as dredging North Park, creating raingardens in partnership with the Watershed Center, wetland education, eradication of invasive species, shoreline protection, and stream restorations within our park system.

The following budget is built on the assumption that the five-year focus will be on improvements to Village Parks, followed by a transition to maintenance and upkeep activities. The budget covers wages, park maintenance, operating supplies, utilities, and improvements. Due to budget constraints, the Village will focus its funding on improving parks concurrently, rather than specifically.

BUDGET YEAR	2018	2019	2020	2021
PARK BUDGET	\$77,954	\$120,975	\$128,700	\$120,695

BUDGET YEAR	2022	2023	2024	2025
EST. PARK BUDGET	\$125,000	\$135,000	\$145,000	\$150,000

The Village of Suttons Bay has a history, although not recent, of pursuing grant funding to implement needed recreation projects and improvements. In the past, Michigan Natural Resource Trust Fund grants have been used to improve various parks and non-motorized opportunities within the Village. The Village is now refocusing its efforts towards improving our public park system to better serve people of all physical abilities and ages and in doing so, will be seeking granting opportunities and partnerships to achieve that goal.

RECREATIONAL PARTNERSHIPS AND OTHER RECREATION PROVIDERS

The Village of Suttons Bay is a major provider of recreation within the Village by way of seven parks including Bahle Park, Coal Dock Park, Deuster Park, Marina Park, North Park, Sutton Park, and Waterwheel Park.

The **Grand Traverse Band of Ottawa and Chippewa Indians**, Traverse Area Recreation and Transportation (TART) Trails, and the Village of Suttons Bay, have developed a close working relationship to facilitate continued development of the local trail network. This partnership will help bring our communities together and offer a safe non-motorized connection for Neejawnisug (children) to access the Suttons Bay Schools.



The **Leelanau Soccer Club** (LSC) is a local non-profit organization run by volunteers, parents, community members and soccer enthusiasts. LSC is the second largest soccer club in the region and embraces having “fun” while developing their soccer skills, personal confidence, teamwork, and sportsmanship.



The **Leelanau Trail**, which is maintained in partnership with TART Trails, is among the most successful of partnerships to date. TART Trails is a local non-profit organization that builds trails, advocates for active living and outdoor recreation, and provides assistance to units such as the Village to see proposed projects through from conception to completion. TART Trails also works closely with the Village and M-DOT on the US **Bike Route 35** that passes through the Village and into surrounding municipalities.



The **Children’s House Montessori School** and the **Watershed Center** focus on yearly work and educational sessions to ensure the health and vitality of various stormwater raingardens throughout the Village. Wetland evaluation, invasive species eradication, and education is provided in partnership with the **Invasive Species Network** for our more sensitive coastal wetland areas and habitats.

The **Leelanau Conservancy** is a local organization dedicated to protecting and preserving valuable natural resources and farmlands. The Conservancy also offers nature hikes and permits respectful public use of its properties for passive recreation. Presently, this organization owns and maintains over 14,000 acres of land -with the



most recent acquisition of the Stites Natural Area located off W. Broadway. The lands include environmentally sensitive wetlands and natural areas, 47 miles of stream and lake frontage and 23 miles of trails, within Leelanau County.

NON-VILLAGE RECREATIONAL PROVIDERS

A brief description of each of the various *non*-village recreation providers follows. Please refer to the Recreation Inventory for further discussion regarding facility ownership and an inventory of all facilities in the Village including those not publicly owned. **Leelanau County** is home to the *Sleeping Bear Dunes National Lakeshore Park, the Leelanau State Park & Fox Island State Park*, three county-maintained parks, and several municipal parks. When combined, Leelanau County offers all levels of recreation opportunities for Village residents. In addition, private and non-profit entities, such as the *Leelanau Conservancy, the Conservation District, and Saving Birds Through Habitat* Programs are primarily provided by private organizations.

The Recreation Inventory provides discussion on the Village’s recreation facilities, and their place in the community, as well as parks and recreation facilities surrounding the Village. Included for each facility is a summary of public input relative to the park, received through the Recreation Plan survey, person to person interaction, community chalk boards placed at various parks, and/or public meetings.

The inventory also includes an assessment of the **accessibility** of the park to people with disabilities, based on criteria provided in the Michigan Department of Natural Resources (MDNR) Guidelines for the Development of Community Park, Recreation, Open Space, and Greenways Plan. The assessment considers the accessibility of both the facilities themselves, as well as the access routes to them. Because of their importance to residents, the inventory also identifies parks and recreation facilities surrounding the Village.

Programming offered by Leelanau County include Leelanau County Soccer Club, Leelanau County Youth Baseball, Softball, and T-Ball organizations generally occur within parks that are owned by area governmental units. The Leelanau County Parks system includes a network of parks and natural areas. Please refer to the Recreation Inventory for further discussion regarding facility ownership and an inventory of all facilities in the Township including those not publicly owned.



NATURAL RESOURCES TRUST FUND GRANT HISTORY

The Village of Suttons Bay has received and successfully completed only two Trust Fund Grants, one of which was awarded in 2011 for the construction and expansion of US Bike Route 35. The grant provided a non-motorized connection from the Village of Suttons Bay to Dumas Road. In 1993, an acquisition grant was received and awarded to the Village for the purchase of over 2 acres of Suttons Bay waterfront, now known as North Park.

Specifics of the grants are detailed below:

Pedestrian – Non-motorized

Grant Number: TF-11-097

Project Title: Front Street Pathway Development Project

Acreage acquired: 1.3 miles

Grant Amount: \$447,789.27

Project Status: Closed

Current use: Bicycle & Pedestrian Trail

Type of Grant: Development

Klumpp Property Purchase

Grant Number: TF-93-305

Project Title: Klumpp Property Purchase

Acreage acquired: 2.3-Acres & 513 ft. of Shoreline (Suttons Bay)

Type of Grant: Acquisition

Grant Amount: \$525,000

Current use: Waterfront Park / Boat Launch

Project Status: Closed

RECREATION INVENTORY

INTRODUCTION

A thorough inventory of existing **parks and recreation facilities** is essential to the development of a meaningful Parks and Recreation Plan. This inventory is intended to help the Village identify the adequacy of various recreational opportunities available to our residents, including any surpluses and deficiencies thereof, which will assist in the development of the Parks and Recreation Plan **Goals and Objectives**.

The Parks and Recreation **Inventory** begins with an explanation of the park facility classification system that was used to conduct this inventory, followed by the recreation inventory itself, which details the park name, park type, park acreage, likely service area, accessibility rating, and available recreational activities. The inventory includes all resources that are available within the Village, whether they are owned by the Village such as **private facilities, semi-public facilities, or public facilities** managed by another entity.



The inventory includes various recreational resources offered by other municipalities outside the Villages political boundaries; however, the inventory is not intended to identify every park within neighboring municipalities, but highlights certain **regional recreational resources** that are likely to be used by Village residents, such as beaches, biking trails, campgrounds, or ski areas.

The Inventory is followed by the Parks and Recreation Area **Descriptions**, intended as a more detailed narrative of the recreational resources available to Village residents, regional residents, and visitors. This inventory was completed in May of 2019. Information used in the inventory was collected from the Village Parks and Recreation Plan (adopted in 2013), the Leelanau County Parks and Recreation Plan, aerial photo interpretation, current and previous plans of surrounding municipalities, field verifications, and internet research. The **Recreation Inventory, Table 2**, begins on Page 12 of this Plan.

PARK FACILITY CLASSIFICATIONS

The Parks and Recreation Inventory is based on the following classification system:

A **Sports Complex** consolidates programmed athletic fields and associated facilities to larger and fewer sites strategically located throughout the County. Sports complexes usually measure at least 20 acres in size.

A **Private Park/Recreational Facility** is privately owned but contributes to the public parks and recreation system. The location and size of a Private Park / Recreational Facility is dependent upon the specific use and the perceived need for the use.

Community Parks serve a broader purpose than Neighborhood Parks and are used to meet both active and passive recreational needs, as well as preserve unique landscapes and open spaces. The location of a

Community Park is determined by the quality and suitability of a site. Community Parks generally serve the entire community and measure *at least 10-acres in size*.

Neighborhood Parks are the basic unit of the park system and serve as the recreational and social focus of a neighborhood, and provide informal active and passive recreation. They generally measure between *one-quarter and one-acre in size*, and serve a population within the Village.

Recreational Boating Facilities are types of boating facilities described as:

Unimproved water access locations – These locations are designated access points for carry-down boats, canoes, and kayaks launching without significant infrastructure.

Improved water access locations – Designated locations for water access points for carry-down boats, canoes, and kayaks launching with supporting infrastructure.

Unimproved Boating Access Site – A designated boat launch location for trailered boats without a formal launch ramp.

Boating Access Site – A designated boat launch location with a ramp and supporting infrastructure.

Recreational Harbor – A harbor designed for use by recreational boaters for protection, overnight stays, or day-use visits.

School Parks are facilities that are owned and managed by Suttons Bay Area Public Schools. In addition to providing play and athletic opportunities for students, school parks can help fulfill an identified need for other classes of parks, such as neighborhood, community, sports complex, or special use. The size and location of school parks is variable depending on function.

State Parks, State Forests, and State Forest Campgrounds are facilities owned and operated by the State of Michigan, and often include opportunities such as camping, swimming, fishing, hunting, boating, biking, nature watching, and other outdoor recreation activities.

Waterfront Park are lands that offer waterfront / beach access for passive and active recreation, such as watersports, volleyball, swimming and other activities.

ACCESSIBILITY ANALYSIS

The Recreation Inventory also lists an accessibility rating for each recreation facility owned by the Village of Suttons Bay. A review of American Disabilities Act (ADA) compliance of Village parks began with an evaluation of information provided in the previous Parks and Recreation Plan. The Parks and Recreation sub-committee visited each park to evaluate accessibility and to determine their short- and long-term needs. The assessment consisted of a visual inspection of each park with regards to accessible parking, beach access, restrooms, activity areas, and amenities. The MDNR Accessibility Grading System (shown below) for Parks and Recreation Facilities was used to determine the parks grade.

- **Level 1.** None of the facilities in the park meet accessibility guidelines. Little pavement is provided and access routes to the facilities are not easily accessible.
- **Level 2.** Some of the facilities meet accessibility guidelines, but many of the facilities or the access routes to them are not easily accessible.
- **Level 3.** Most of the facilities meet accessibility guidelines. Parking areas and walkways are paved; and while most facilities are generally accessible, some barriers may exist for certain people because of age, ability or situation.
- **Level 4.** All the facilities meet accessibility guidelines. The Park is accessible and the routes to facilities within the park are accessible, but some play or other equipment may not be designed for everyone.
- **Level 5.** Universal design guidelines were used to design the entire park.

Following the inspection and evaluation it was determined that most of the facilities do not meet accessibility guidelines. The focus of this plan is to improve accessibility at our parks while upgrading basic amenities such as replacing water fountains with ADA compliant water bottle fillers, providing mobility-mats at our beaches, adding accessible picnic tables and adding hard surfaces.

The Disability Network of Northern Michigan is an invaluable resource that provides the Village with guidance, information and support when making changes or planning projects throughout the Village of Suttons Bay.



TABLE 2 - RECREATION INVENTORY



2021	VILLAGE OF SUTTONS BAY FACILITIES	FACILITY TYPE	SIZE IN ACREAGE	LIKELY SERVICE AREA	DESCRIPTION OF AMENITIES
ACCESSIBILITY RATING PROVIDED FOR VILLAGE OWNED PARKS ONLY					
VILLAGE OF SUTTONS BAY PARKS	Bahle Park	Community Park	30ac	Village and Surrounding Areas	Accessibility Rating: 1 Amenities: Hiking / Walking Trails, Snow Shoeing, Sledding Hill, Warming Hut,
	Coal Dock Park	Waterfront Park	3 ac	Village and Surrounding Areas	Accessibility Rating: 2 Amenities: Fishing Pier, Boardwalk, Picnic Tables, An Interpretive Bird, Waterfowl and Wetland Viewing Area.
	Deuster Park	Neighborhood Park	5 ac	County Wide Youth Sports	Accessibility Rating: 2 Amenities: Restrooms, Youth Soccer Fields, T-Ball Field; Softball Field, Gravel Parking Area (Former Fairground Site)
	Suttons Bay Marina	Recreational Harbor	6 ac	Village and Region	Accessibility Rating: 2 Floating Docks, power and water systems; picnic tables, pier for viewing, Main Pier, South Pier and Coal Dock.
	Marina Park	Waterfront Park/Improved Water Access Location	2 ac	Village and Surrounding Areas	Accessibility Rating: 3 Amenities: Mobility Mats to the Water, Sandy Beach, Open Recreation Area, Play Structure, Volleyball Court, Picnic Tables, Grills, Bike Path; unimproved water access location
	Marina Park - South Side	Neighborhood Park	2 ac	Village and Region	Accessibility Rating: 2 Amenities: Open Picnic Area, Picnic Tables, Interpretive Bird, Waterfowl and Wetland Viewing Area, Pier, Paved Parking Area
	North Park	Waterfront Park/Improved Water Access Location	4 ac	Village and Region	Accessibility Rating: 4 Amenities: Open Recreation Area, Barrier-Free Bathrooms & Pavilion, Paved Parking Area, Boat Launch Access to Suttons Bay, 1,500 feet of Suttons Bay Shoreline; Improved water access locations
	Sutton Park	Waterfront Park/Unimproved Water Access Location	2 ac	Village and Surrounding Area	Accessibility Rating: 2 Amenities: Open Recreation Area, Play Structures, Bathrooms, Pavilion, Gravel Parking Area, 300 feet of Suttons Bay Beach, Designated Swim Area; unimproved water access location
	Waterwheel Park	Neighborhood Park	1 ac	Village	Accessibility Rating: 1 Amenities: Tennis / Pickle Ball and Basketball Courts, Picnic Tables, Stream with waterwheel, Open Area, bike rack

TABLE 2 - RECREATION INVENTORY



NATIONAL PARKS	Federal Facilities	Facility Type	Size in Acreage	Likely Service Area	Description of Amenities
	Sleeping Bear Dunes	National Lakeshore	Combined see below	State/Nation	35 Miles of shoreline on Lake Michigan, inland lakes, dune formations, beaches, forests, rural historic farm district
	National Lakeshore	National Lakeshore	71,187	State/Nation	The National Lakeshore is comprised of North Manitou & South Manitou Islands, as well as county land. Amenities and activities include: Campgrounds, rustic/backcountry activities, hiking, swimming, kayaking, canoeing, paddle boarding, hunting, cross country skiing, driving tours, interpretive center with auditorium, interpretive programs, snowshoeing, birdwatching, wildflowers, scenic views
STATE OF MICHIGAN PARKS	State of Michigan Facilities	Facility Type	Size in Acreage	Likely Service Area	Description of Amenities
	Leelanau State Park	State Park	1300	State wide	Grand Traverse Lighthouse and Museum; rustic campground with 42 campsites along Lake Michigan; two mini cabins (each with room to sleep four); a picnic pavilion with tables and outside grills; playground area; pit toilets; 8.5 miles of hiking trails, fat bike trails, bird watching, cross country skiing, snowshoeing trails; designated area of hunting; sand dunes; woodlands; an inland lake; an overlook of Lake Michigan and the Fox Islands; and a pristine section of the Cathead Bay/Lake Michigan shoreline.
	Pere Marquette State Forest	State Forest	5000	State wide	The Pere Marquette State Forest encompasses lands in the upper lower peninsula on the western side of the state. Counties within the Pere Marquette are: Leelanau, Benzie, Grand Traverse, Kalkaska, Manistee, Wexford, Missaukee, Mason, Lake, Osceola, Oceana, Newaygo and Mecosta.
STATE OF MICHIGAN - WATER ACCESS LOCATIONS	State of Michigan Facilities	Facility Type	Municipality	Likely Service Area	Description of Amenities
	South Lake Leelanau	Boat Launch / Access	Bingham	County	Boat Launching ramp with dock and parking for two cars and trailers. Provides access to lower Lake Leelanau from Bingham Road
	Cedar Lake	Boat Launch	Elmwood	County	A hard surface ramp with 15 parking spaces and a public toilet facility
	Leland River	Boat Launch	Leland	County	Parking, picnic tables, bathroom
	South Lake Leelanau	Boat Launch	Solon	County	Dock, ample parking space, bathroom, boat launch - MDNR.
	South Lake Leelanau	Boat Launch	Suttons Bay	County	Narrows, boat launch, parking bathrooms
	Glen Lake	Boat Launch	Glen Arbor	County	Located via the Lake Street Ramp
	Grand Traverse Bay	Boat Launch	Bingham	County	Parking / bathrooms

LEELANAU COUNTY MUNICIPAL PARKS

Bingham Township Parks		Facility Type	Size	Likely Service Area	Description of Amenities
	Boughey Park	Township Park		County	West Grand Traverse Bay/Lake Michigan frontage; swings, picnic tables, grills, pavilion
	Hendryx Park	Township Park		County	Leased from the Leelanau County Road Commission for 99 years; West Grand Traverse Bay/Lake Michigan frontage/sandy shore, parking, grill, picnic table, restrooms
	Bingham Township Park	Township Park		County	Located off Park Road with South Lake Leelanau frontage with swimming, picnic tables, grills, changing house, restroom facilities, basketball court, trash receptacles
	Groesser Park	Township Park		County	West Grand Traverse Bay with Lake Michigan frontage; sandy shore, scenic view
	Mebert Creek Natural Area	Township Park	155 Acres	County	East Shore of Lake Leelanau wetlands used for hiking and exploring
Centerville Township Parks		Facility Type	Municipality	Likely Service Area	Description of Amenities
	Centerville Park	Boat Launch	Centerville Twp	County	On Lake Leelanau; boat launch, dock, two pavilions with tables, porta-johns in the summer
Cleveland Township Parks		Facility Type	Size	Likely Service Area	Description of Amenities
	Little Traverse Lake access	Boat Launch		County	Launch & picnic area
Elmwood Township Parks		Facility Type	Size	Likely Service Area	Description of Amenities
	Greilickville Harbor Park	Township Park		County	Marina with deep water launch capability, contracted and transient boat slips and buoys; beach area, covered picnic facilities with grills, playground equipment, restroom facilities and dedicated fishing area.
	Cherry Bend Community Park	Township Park		County	Covered picnic facilities with grills, playground equipment, tennis courts, soccer, volleyball, baseball field
Empire Township Parks		Facility Type	Size	Likely Service Area	Description of Amenities
	Old Settler Picnic Grounds	County Park	6.5 acres	County	Chapel/ meeting room, playground, boat launch, picnic area with tables, grills and benches

TABLE 2 - RECREATION INVENTORY



Glen Arbor Township Parks				
Facility Type	Size	Likely Service Area	Description of Amenities	
Empire Township Park	Township Park		County	Picnic shelter, public campgrounds
Glen Arbor Township Park	Township Park			Basketball court, pickleball, 4 tennis courts, picnic area, pavilion children’s play area with a variety of playground equipment
Glen Arbor Garden	Township Park		County	Restrooms; garden; walking and sitting area
Kasson Township				
Facility Type	Size	Likely Service Area	Description of Amenities	
Kasson Township Park	Township Park		County	Playground, tot lot, picnic area
Leelanau Township				
Facility Type	Size	Likely Service Area	Description of Amenities	
Omena Beach	Public Access			Omena Bay of West Grand Traverse Bay/Lake Michigan with 100 feet of sand beach; unsupervised swimming, playground area, picnic tables, a vault toilet
Christmas Cove	Public Access		County	Lake Michigan with 200 feet of sand beach; unsupervised swimming; picnic tables, a vault toilet
Peterson Park	Township Park		County	Lake Michigan with 1,000 feet of beach frontage; stairway to beach; scenic overlook; 25 picnic tables, 25 outdoor grills, play equipment, volleyball area, pavilion with 6 tables and two large grills, well water, vault toilets
Braman Hill	Recreation Area		County	Scenic overlook, picnic tables, outdoor grills, fire pit, drinking fountains, tot lot, basketball courts, 4 tennis courts, skateboard park with 8 ramps and obstacles with 100 feet of quarter pipe, unsupervised lighted ice rink, sledding hill, warming room, handicap accessible restrooms; Northport Sportsman’s Club Shooting Range, telephone
Buster Dame Recreation Field	Ballfield		Leelanau Township	3 ball diamonds, 4 aluminum bleachers, concession stand, handicap accessible restrooms
Leland Township				
Facility Type	Size	Likely Service Area	Description of Amenities	
Hancock Field	Township Sports Fields		County	Softball and baseball diamonds, soccer fields, tennis courts, bleachers, skateboard ramps, grandstand, picnic pavilions, drinking water, parking, concession stands
Bartholomew Park and Nedow’s Bay	Township Parks		County	Lake Leelanau beach front, lifeguard, docks, grills, firepit, picnic table, boat launch
John G. Suelzer	Township Parks		County	Boat launch, Lake Leelanau beach front, parking, dock, picnic area, playground, grills, firepit

TABLE 2 - RECREATION INVENTORY



Schneider's Beach	Township Parks		County	Lake Leelanau, sandy beach, dock, parking, picnic area, grills, firepit, boat launch
Grove Park	Township Parks		County	Tennis courts, picnic tables, shelter, playground, parking, water, basketball court
Provemont Pond Recreation Area	Township Parks		County	Undeveloped woodland, fishing pond
Lake Leelanau Baseball Diamond	Township Parks		County	Baseball field, dugout, parking, water
Lake Michigan Beach Access Sites	Township Parks		County	Cedar Street · Reynolds Street · Thompson Street · North Street · Avenue A
Lake Leelanau Access Sites	Township Parks		County	Chandler Street · Grand Street · Fourth Street · Court House Street · River Street · Horn Road · St Marys Street · East Meinard Street · St Joseph Street · William Street
Leland Harbor	Township Parks		County	Harbor of refuge: accommodates approximately 70 small vessels more if "rafting up"; allowing for short stays; provides fuel and sewage services, local retail stores; boat launch ramp, a picnic area, playground, toilet, shower facilities, boat trailer parking; charter fishing boats; commercial fishing boats; commercial excursion boats and the National Lakeshore ferry concession to the Manitou Islands; will be expanded and improved
Fishtown	Non-Profit Status		County	Purchased by the community nonprofit, Fishtown Preservation Society to be preserved for the public; historic fishing village; small shops
Clay Cliffs	Township Park		County	New 105-acre acquisition by Leland Township. Will include hiking trails and observation lookout over Lake Michigan by fall of 2014. Managed by the Leelanau Conservancy
Solon Township	Facility Type	Acres	Likely Service Area	Description of Amenities
Solon Township River Park	Township Park		County	Canoeing, kayaking, boating; five miles, no wake zone to Lake Leelanau
Solon Township Playground Park	Township Park		County	Baseball diamonds, tennis courts, playground area
Joe Vlack Memorial Park	Township Park		County	Offers fishing
Solon Township Park	Township Park		County	Picnic tables, grills, pavilion, dock, rustic boat launch

TABLE 2 - RECREATION INVENTORY



Suttons Bay Township		Facility Type	Acres	Likely Service Area	Description of Amenities
Graham Greene Park	Township Park	15	County	Rocky beach frontage on Grand Traverse Bay/Lake Michigan; swimming, picnicking, walking, grills, tables, toilets, wooded	
Vic Steimel Park	Township Park	1	County	Rocky beach frontage on Grand Traverse Bay/Lake Michigan; swimming, picnicking, boat launching, grills, trash containers, picnic tables	
Lake Leelanau Access	Boat Launch	0.06	County	Water access-South Arm of Lake Leelanau Access	
45th Parallel Park	Township Park	43	County	Plans to create walking and cross-country skiing trails; picnic, scenic overlooks, shoreline access to Grand Traverse Bay/Lake Michigan	
Herman Park	Township Park	126	County	Active recreation including soccer fields, disc golf, tennis courts, Pickleball Courts & nature trails. Future development to include Pump Track and Dog Park	
Ice Rink Park	Township Park		County	The park is located within the Village limits hosting an active ice rink in the Winter and open space in the summer.	
Village of Northport		Facility Type	Acres	Likely Service Area	Description of Amenities
Municipal Bathing Beach	Village Park		County	Grand Traverse Bay/Lake Michigan; playground area, volleyball court, toilets	
Haserot Waterfront Park	Village Park		County	Grand Traverse Bay/Lake Michigan; marina, picnic tables, grills, pier fishing, toilets, boat moorings, swimming	
Mill Pond	Village Park		County	Fishing	
Village of Empire		Facility type	Acres	Likely Service Area	Description of Amenities
Lake Michigan Beach Park	Village Park	6.7	County	Lake Michigan; pavilion, swimming, playground, lighthouse, restrooms, picnic grills, boat launches – South Bar Lake, Lake Michigan	
James R. Johnson Memorial Park	Village Park	5.3	County	Lion’s Club; pavilion, playground, restrooms, open space	
North Park	Village Park	12	County	2 ballfields (one lighted) with backstops and fenced outfields; 4 picnic grills, walking path, access path to the creek, children’s play area, storage building, 2 restrooms, handicapped accessible restroom, tennis courts	

PARKS AND RECREATION AREA DESCRIPTIONS

VILLAGE-OWNED PARKS AND RECREATION AREAS

The Village of Suttons Bay residents enjoy eight recreational properties that are actively used for recreational purposes. Of the eight properties, two contain active recreation facilities, including, soccer fields and sledding hills, along with a warming hut, public restrooms, picnic tables, and pavilions. The remaining properties are primarily undeveloped greenspace offering nature hikes, biking trails and waterfront properties that offer pristine swimming areas and easy beach access.

BAHLE PARK



Donated by the Bahle family in the 1960's, this 30-acre park is located at the end of West Street and features a sledding hill, walking/snow shoe trails, and a student constructed warming hut. Non-Winter activities include foraging for wild mushrooms, leeks and berries. Citizen led initiatives include annual tree plantings, trail maintenance, and more.

COAL DOCK PARK



Coal Dock Park is a one-acre park at the southernmost end of the marina. The Coal dock offers boat slips maintained by the marina. The Park includes a fishing pier, a pier to accommodate the Inland Seas Educational Association Schooner, crushed stone walking path, and picnic tables. A wetland area that bisects South Side Marina Park and the Coal Dock Park, offers a diverse wetland habitat for wildlife viewing and educational opportunities. A joint effort with local schools and the Inland Seas Educational Association will elevate this park to a one of a kind

“learning park” for people of all ages.

DEUSTER PARK



Deuster Park, was named after the Deuster Family that were one of the first settlers in Suttons Bay. Deuster Park is a 2-acre park located off M-22 that is primarily used for youth soccer. The Village partners with the Suttons Bay Public Schools and Leelanau Soccer Club, to provide a three-field location for numerous U-8 and younger teams. The Park provides a large gravel parking area, and amenities such as picnic area with tables, bathrooms and bleachers.

MARINA PARK

Suttons Bay’s most popular park is located one block east of downtown and offers residents and visitors a waterfront sunrise view. The Park hosts a large open space area, picnic tables, grills, a playground, and volleyball nets. Marina Park is often used for family gatherings, community events, such as festivals and fundraisers and is one of three parks (South Side & Coal Dock) located in the vicinity of the Marina. A 58-space parking lot shared with the marina and public parking along the roadway provides parking access to Marina Park visitors. Shared with pedestrians, the Leelanau Trail provides an accessible route for people of all ages and accessibility and includes a beach access Mobility-Mat.



SOUTH SIDE MARINA PARK

South Side Marina Park is a small park located between the Marina and Coal Dock Park. The Park is accessed via Madison Street, with a paved parking area that accommodates 20-25 cars. The Park offers open space and picnic areas along the waterfront and adjacent to the Marina. Transient marina slip-users and locals use this park for interacting, picnicking and watching sunrises. For the purpose of this Plan, and illustration purposes, we have combined this park with Marina Park.

MARINA HARBOR

The Suttons Bay Marina is a recreational Harbor offering 171-slips for transient and reserved spaces for slip holders, overnight stays and day use visits. The marina is accessed by a loop drive with 58 parking spaces, which provides access to the Slip holders and the Marina Park visitors when available. The 2012 Marina Master plan proposed several upgrades which were implemented and finalized in 2019. These upgrades not only enhanced performance, but also safety. With a floating dock system, the marina is capable of handling high and low lake levels. This aspect has become crucial with near lake level lows in 2015 and record high lake levels in 2020.



NORTH PARK

North Park is a 2-acre park that includes a pavilion, restrooms, a boating access site, an open space area, and parking. Home to the Leelanau Farmers Market and various public events, this waterfront park provides the necessary infrastructure to those utilizing the boat launch or buying produce. Non-motorized access provides a direct connection to Marina and various parks and beaches. The Park was updated in 1995 with MDNR funds. **Grant Number: TF-93-305.** The Village has identified this park for a pedestrian viewing / fishing dock, plantings and landscaping, improvements, and fish cleaning station.



SUTTON PARK



Sutton Park, also known as South Shore Park, is a beach park located on Beach Street. Sutton Park is a very active family beach which can be accessed directly from M-22. The 1-acre park includes a gravel parking area, picnic pavilion, restrooms, swim area, swimming beach, playground equipment, cooking grills, and picnic tables. The Village has identified this park as a high priority to incorporate or enhance accessibility for all ages and abilities. Suttons Park was dedicated on July 4, 1954 to commemorate Harry & Martha Sutton who in November of 1854 founded the first permanent settlement in the Village of Suttons Bay.

WATERWHEEL PARK

Waterwheel Park is located on the corner of Jefferson St and St Mary's Avenue and consists of two (2) acres of land. The Park is comprised of three very different areas that cater to all facets of recreation. The northern portion is comprised of a tennis / pickle ball court and basketball court, while the southern, more passive area, is comprised of picnic tables, stream and waterwheel. The third portion of the park, located adjacent to the lower portion of the stream, is accessed by way of downtown. This "wedge" portion of the park was donated to the Village by Lars Johan Gronseth, whose family settled in Suttons Bay in 1886. This Park is among the most popular parks for visitors due to the waterwheel feature, location to downtown, and both passive and active recreational opportunities. Given the historic value and public sentiment regarding the waterwheel, the Village should place a high value on preserving and / or restoring the waterwheel for future generations.



OTHER RECREATIONAL OPPORTUNITIES WITHIN THE VILLAGE

The following narratives describe facilities that are not owned by the Village yet are public, semi-public, or private opportunities for recreation within the Village limits.

LEO CREEK PRESERVE

The **Leo Creek Preserve** is located within the Village of Suttons Bay and best described as “a magical place near Suttons Bay, along beautiful Leo Creek”. The 9-acre preserve protects approximately, 2,250 feet of cold-water stream that meanders its way through cedar stands, on its way into Suttons Bay. This educational playground and 1-acre botanical garden are now protected in perpetuity thanks to the Leo Creek Preserve nonprofit and the Leelanau Land Conservancy. It is accessible only from the Leelanau Trail – just south of the Fourth St. trailhead. Leo Creek Preserve is always open.



SUTTONS BAY SCHOOLS

The Suttons Bay High School, Middle School and Elementary School are located on Elm Street within the Village of Suttons Bay. Recreational facilities at the site include a running track, multi-purpose athletic fields, football, soccer, baseball and softball fields.



ICE RINK PARK

Ice Rink Park is a Township owned park located in the Village’s single family central residential district. This Park is ideal for the timeless, seasonal activity of ice skating and also hosts a pond hockey league. Beloved by students, kids and adults, this winter activity has been going for generations, thanks to volunteers township support.

LOCAL RECREATIONAL ASSETS

In addition to Village-owned properties, a wide variety of recreation opportunities are available within and near the Village.

FRIENDSHIP CENTER

The Friendship Community Center, located on Broadway Avenue, provides meeting and activity space for the community, and hosts groups such as the Senior Center and Leelanau Investing for Teens (LIFT).

INLAND SEAS EDUCATION ASSOCIATION CENTER

Inland Seas Education Center, located on Front Street, provides aquatic science, environmental awareness, and sailing training opportunities for children and adults, both onshore and aboard traditionally-rigged tall ship schooners, along the shores of the Great Lakes, and in local rivers, streams, and wetlands.

LIBRARY

Meeting area, reading rooms, computer access, and educational events are available at the Suttons Bay Bingham District Library, which is located on Front Street in the Village.

SUTTONS BAY PUBLIC SCHOOLS

Baseball/football fields, basketball courts, soccer fields, and playgrounds are available on the 36-acre Suttons Bay Public Schools campus.

HERMAN COMMUNITY PARK

A 126-acre park owned by Suttons Bay Township is located just outside the southwestern boundary of the Village. The park was purchased in 2008 and has added a multi-purpose field for use by the Leelanau Soccer Club. Future projects include a pump track, more pickleball courts and a dog park. The park provides a covered Pavilion with active and passive recreation, such as tennis and pickleball courts, disk golf, fishing, hunting, snow-shoeing, cross country skiing, a memorial garden, and nature trails.

STITES NATURE AREA (SUTTONS BAY TOWNSHIP)

This newly acquired 50-acre recreational property is located on W. Broadway Street and within feet of the Village boundary. The property, owned by the Leelanau Conservancy, is mostly in a natural state with timber cut scars and trails.

REGIONAL RECREATIONAL OPPORTUNITIES

In addition to the village and local recreational properties, the following regional assets are listed below.

BELANGER CREEK PRESERVE (PESHAWBESTOWN)

A Nature Preserve located in Peshawbestown and comprised of 68 acres, 2,800 feet of stream, 170 species of flowers, steep hills, conifer swamps and giant cedars provides recreational opportunities such as birding, hunting, hiking, and snowshoeing.

HANCOCK FIELDS (LELAND)

Basketball courts, softball and baseball diamonds, soccer fields, tennis courts, pickle ball, skateboard ramps, grandstand, picnic pavilions, drinking water, parking, concession stands.

KEYSTONE SOCCER COMPLEX – SPORTS COMPLEX (GRAND TRAVERSE COUNTY)

The Keystone Soccer Complex is a 77-acre parcel along Keystone Road and is home to a 40-acre soccer complex. This complex has 15 soccer fields and is home to over 3,000 soccer enthusiasts. Future developments on this property may include baseball fields and trails.

LAKE MICHIGAN BEACHES

The Leelanau County region is renowned for its sandy Lake Michigan shoreline. Beaches within proximity to the Village are numerous and include Sleeping Bear Dunes National Lakeshore. The beaches along the Michigan lakeshore attracts non-traditional sports enthusiasts such as surf fishermen targeting species such as salmon, brown trout, and steelhead. Kiteboarding, surfing, and windsurfing are plentiful on the lakeshore in the spring and fall months.

LEELANAU LAND CONSERVANCY PROPERTIES

The Leelanau Conservancy, a 501(c)3 organization, purchases land and easements for the purpose of conservation and recreation. Since 1988, in that time they have preserved and protected 14,000 acres of land, 47 miles of lake and stream frontage and 23 miles of trails throughout Leelanau County. (See also Stites Nature Area & Leo Creek Preserve)

LEELANAU STATE PARK

The Leelanau State Park covers about 1,300 acres of woodlands, beaches, and sand dunes at the northern end of Leelanau County, north of Northport. Eight and one-half (8.5) miles of trails for hiking, biking, snowshoeing, and skiing, a 42-site rustic campground, two mini-cabins, picnic pavilion and grills, bird watching, hunting, and playgrounds are available. The Grand Traverse Lighthouse Museum is also located at the State Park.

LEELANAU TRAIL

The Leelanau Trail is a part of the TART Trails, Inc. The term “TART Trails” is commonly used to refer to the overall regional network of non-motorized trail ways. A parking and informational area is located on Fourth Street, within the Village, to provide trail users a safe and informative place to gather or meet up. The trail provides many opportunities to connect with and enhance existing parks, particularly Marina Park, South Side Marina Park, Coal Dock Park, North Park, and Deuster Park. The 17-mile non-motorized paved trail, which runs along a former railroad corridor, extends south from Dumas Road in the Village of Suttons Bay to Traverse City. A bench, bike rack and Village Information “British Phone Booth” is located at First Street. An information kiosk is also located on the trail at Marina Park.



M-22 SCENIC HERITAGE ROUTE

In 2002 the State of Michigan designated 60 miles of M-22 and M-109, as the Leelanau Scenic Heritage Route. The Village of Suttons Bay is located along the Eastern portion of the M-22 Leelanau Scenic Heritage Route. The Leelanau Scenic Heritage Route begins on M-22 on the east side of Leelanau County at the Traverse City boundary line and traverses north along Grand Traverse Bay, through the Village of Suttons Bay and north to M-109, through the Sleeping Bear Dunes National Lakeshore.

MYLES KIMMERLY RECREATION AREA (MAPLE CITY)

A 143-Acre County Park that offers soccer, basketball, baseball, tennis, disc golf, and 4-H.

OLD SETTLERS PARK (MAPLE CITY)

Old Settlers' Park is located on the southeastern shore of Glen Lake. It was established as a picnic ground in 1892 with access to Glen Lake.

SLEEPING BEAR DUNES NATIONAL LAKESHORE

The Sleeping Bear Dunes National Lakeshore is located minutes from the Village and within both Leelanau and Benzie Counties. The Park includes over 71,000 acres, 65 miles of Lake Michigan shoreline, 26 inland lakes, 12 miles of rivers and streams, 105 miles of trails, 357 campsites, and two islands (North and South Manitou). The US Bicycle Route 35 allows cyclist the ability to access the Sleeping Bear Dunes National Lakeshore directly from the Village.



STRONGHEART CENTER

The Strongheart Center, owned and operated by the Grand Traverse Band of Ottawa and Chippewa Indians and located in Peshawbestown, provides a number of recreational facilities, including baseball and soccer fields, basketball courts, a skate park, volleyball courts, playgrounds, indoor basketball courts/gymnasium, rubberized indoor track, weight rooms, and an aerobics/ dance studio. The Strongheart Center also provides community meeting and activity space.



VERONICA VALLEY PARK (BINGHAM TOWNSHIP)

A 92-acre County Park that offers passive recreation such as hiking, fishing and wildlife viewing.

VILLAGE RECREATIONAL BOATING FACILITIES

A Comprehensive Marina Master Plan provides a more in depth understanding of our Marina Harbor and Boat launches located within the Village of Suttons Bay. The Village operates and maintains two public boat launches that cater to sport fisherman, recreational boaters and sail boats. The Village Marina boat launch is a *Recreational Harbor* and offers a two-lane boat launch with a launch depth and ramp that is adequate to accommodate most trailable boats. This launch offers a secure and convenient launch for slip holders and transients and is the preferred launch for those visiting the area and less familiar with large water boating. Due to the high water and issues caused by them, this boat launch is currently closed.



The Suttons Bay Village Harbor (above) successfully obtained a designated Clean Marina Certification in 2014 and continues to implement best practices recommended by the Clean Water Program. In 2019, we upgraded our dock system to a modern floating dock system. This safety upgrade proved beneficial during the high-water phenomenon of 2019-2020 seasons. The upgrades limited shoreline access points by way of gangways and incorporated water and electrical utilities within the docks. Yearly discussions and planning include best management practices such as reducing and eliminating surface water runoff, protecting fish and wildlife habitat within the Harbor and adjacent wetland area and identifying and eliminating invasive species.

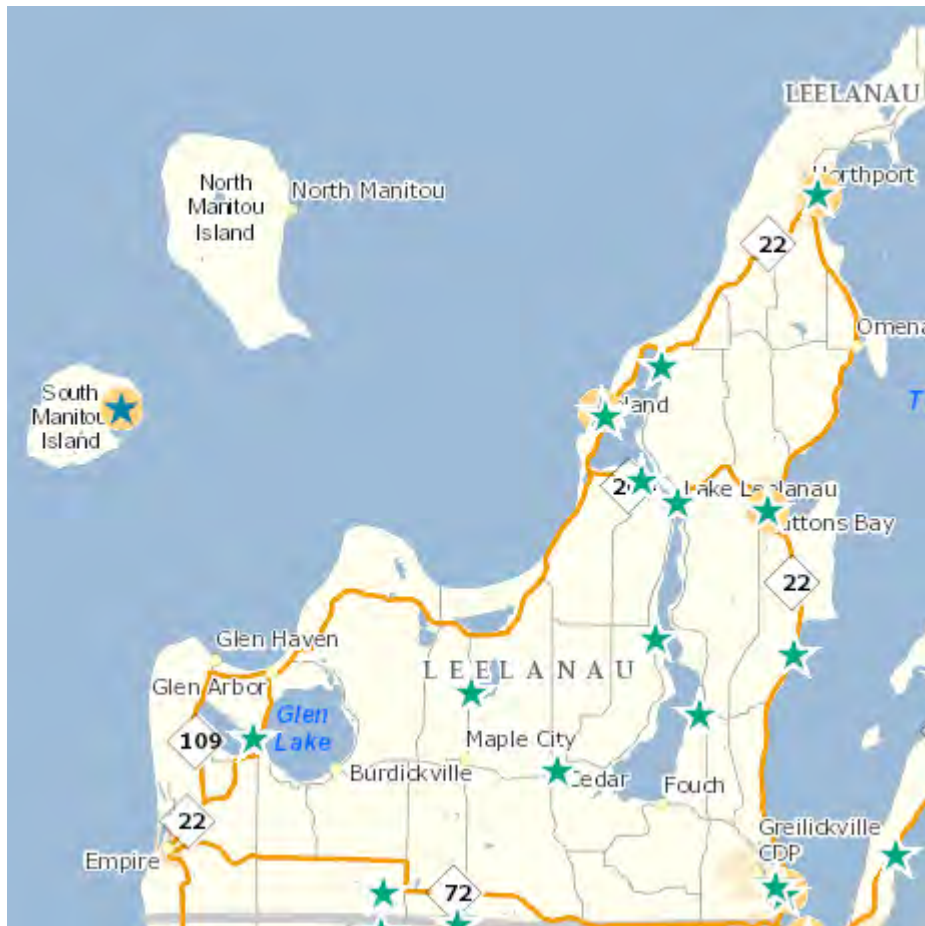
A *Boating Access Site*, located at North Park offers two-lanes and provides a large parking lot to accommodate numerous vehicles with trailers. This launch is more of an open water launch when compared to the marina launch and is preferred by larger boats and locals that are familiar with the waters of Suttons Bay. The launch provides bathroom facilities, picnic area, and a pavilion, making it a convenient and ideal location to access the water.





COUNTY WIDE MDNR ACCESS SITES

Elmwood Township (Elmwood Marina), located in Leelanau County also provides access to West Grand Traverse Bay as does the Northport Marina, which provides access to Northport Bay.

Additional MDNR water access sites approximately 1 acre in size, are located throughout Leelanau County, on popular Glen Lake, Lake Leelanau, Leelanau River, and Grand Traverse Bay. Amenities offered at these locations include boat parking, ramp, dock, and rustic restrooms. An illustration identifying boat launch facilities is shown below.



Legend

-  Boating Access Site
-  Harbor

DESCRIPTION OF PLANNING AND PUBLIC INPUT PROCESS

OVERVIEW OF PUBLIC OUTREACH

Community engagement is the key to a successful park plan and crucial in determining the goals, objectives and action plan for our community. Quite often communities place too much emphasis on surveys and public hearings, resulting in a disconnect from the demographic who uses the parks the most. The intent of this plan is to provide a safe, easy to access and connected non-motorized system that attracts users of all ages, all abilities and walks of life to enjoy our community parks. In order to accomplish this, we had to make sure we were receiving input from *all* demographics. Our methods were simple, yet very productive and described further along in this document.

TRADITIONAL SURVEY APPROACH

A survey was created and mailed to ALL residents of the community to obtain statistically representative results. A secondary, online survey, was made available on our website, with additional links sent to the local school and posted on the "Heard Around Leelanau Facebook Page" (further discussed below).

We compared our community to national recreation guidelines, compiled information gathered from the public involvement process, and institutional knowledge and insight into the community offered by the Planning Commission, Village Staff, and Village Council.

TARGETED HIGH SCHOOL SURVEY APPROACH

Upon evaluation of the survey results it was clear that we lacked the teenage and young adult demographic. Working with our Suttons Bay Schools partners we were able to target this missing demographic and gain valuable feedback. Surveys were distributed within various classes, which resulted in an approximate 75% return. Perhaps more importantly, we received feedback from those age groups we are targeting to encourage our goal of intergenerational interaction.

ONLINE ENGAGEMENT

As mentioned above, in addition to the paper survey, we also implemented an identical digital survey via the Village website as a more convenient alternative for our tech-savvy generation. This digital method is more appealing to the younger demographics who (we believed) prefer the online approach over paper and pencil. Several web-based materials kept the public informed about the planning process as we worked our way through the planning process.

PARK SPECIFIC OUTREACH

The Village staff installed 32 square foot chalk boards at all our parks titled YOUR PARK, YOUR IDEAS to give visitors of the park, a platform to be heard. The chalkboards were placed at all our parks, throughout the 2019 and 2020 Summer season, and were photographed and cleaned every Monday or on an as needed basis. This was a popular community engagement tool and provided a fun platform for visitors.

TARGETED OUTREACH

School aged children and young adults are most likely to provide valuable input on what would make them more apt to visit a park. We engaged groups of kids from as far away as the City of Detroit that were visiting our community on a school field trip and who were waiting to board the Inland Seas Schooner. We reached out to those recreating in our parks, and "hanging out" downtown. This method of engagement was among the most successful of all outreach efforts.

STAKEHOLDER INTERVIEWS

Staff conducted interviews with key stakeholders representing a wide variety of user groups, community leaders, village staff, and special interest groups. These groups included TART Trails representatives, Leelanau County Land Conservancy, Leelanau Soccer Club, Inland Seas Educational Association, the Invasive Species Network, Village Council members, Planning Commissioners, and Business leaders.

BASIS FOR GOALS AND OBJECTIVES

A number of factors were analyzed during the preparation of this Plan. The results of the community outreach and public input played a crucial role in the development of the Plan's draft Goals and Objectives, which in turn provided the basis for the development of the Action Plan.

The following specific characteristics were considered as the particular goals and objectives were formulated:

DEMOGRAPHIC CHARACTERISTICS 2020 AMERICAN COMMUNITY SURVEY (ACS) RESULTS

GEOGRAPHIC DISTRIBUTION

According to the 2020 Census, redistricting information, the Village of Suttons Bay had a population of 613 persons. The 2020 American Community Survey 5 Year Estimates measured a population of 613 as well.

SOCIAL CHARACTERISTICS

The total population of the Village of Suttons Bay was 613 persons, a 4.0% growth rate since the 2000 Census population of 589. The median household income in Village of Suttons Bay in 2020 was \$93,250. The employment rate was 38.2%, and the percentage of families and individuals whose income was below the poverty level was 2.3%.

The 2020 ACS results identified Village residents averaged 69.1 years in age, with 6.8% of residents below 18 years and 93.2 eighteen (18) and over, with 63% of those aged 65 or older.

To commute to work, 49.4% of the workforce drove alone, 7.8% carpooled, and 15.5% walked, took public transportation, or commuted by other means. 25.7% of the workforce worked at home.

There were 455 housing units with 85.5% home ownership. It is important to note that although the Village census figures indicate 613 residents at the 2020 redistricting census, the Village has a significant number of seasonal residents which increases the summer population of the village tremendously. In the last three years, the Village has issued 63 short-term rental permits to property owners located within the village which makes up 14% of the current housing units. This does not include Bed and Breakfast uses located within the Village.

PHYSICAL CHARACTERISTICS - NATURAL FEATURES

The Village of Suttons Bay, an incorporated, waterfront community is located midway up the eastern shore of Leelanau County. The Village has an elevation of 581 feet and extends upward nearly 300 feet to the west, providing unmatched views and recreational opportunities.



SUTTONS BAY

Located on the “west arm” of the Grand Traverse Bay, Suttons Bay has a width of approximately 8,100 ft or 1.54 miles at its mouth. The bay reaches a depth of over 115 ft in its deepest spot yet depths are more consistent throughout the bay in the 40–55-foot range.

BABBLING BROOK CREEK

Known to locals as Babbling Brook Creek, this small, yet mighty creek, originates by way of a natural spring before flowing parrallel to M-204, under M-22 and daylighting on the east side of the roadway. This creek serves as the northern most property line to North Park and flows in to our crystal clear Suttons Bay waters.

LEO CREEK

Leo Creek is a stream that originates in Suttons Bay Township and meanders its way down through the Village and into the crystal clear waters of Suttons Bay. The “Swamp Angel” (pictured) and protector of this sensitive ecosystem has been challenged by those filling her sensitive Leo Creek watershed wetlands.



Photo Credit: Mark Smith

WATERWHEEL CREEK

Known to locals as Waterwheel Creek, this small stream originates in the higher elevations of the Village and meanders its way over two privately owned waterwheels on the Martinson property, before making its way to waterwheel park, over the wheel, across M-22 and into our designated Michigan Clean Marina.



INVASIVE SPECIES

Invasive species are non-native organisms that, when unmanaged, may cause harm to people, the economy, and the environment. Perhaps most importantly, invasive species harm the natural environment by displacing the native species which would otherwise support the food web. Invasive species often out-compete and displace native species, reducing biodiversity and destabilizing ecosystems when left unmanaged.

Over the past several years, area land managers have grown increasingly concerned about how invasive plant species impact in Leelanau County. As a result, the Invasive Species Network (ISN) was formed to survey and manage species in regional natural areas over a five-county area, as well as to educate the public about our shared natural resources. One of the ISN’s primary goals is to work to prevent the introduction

and spread of new invasive species. Most recently, we have partnered with the ISN to evaluate our shoreline wetland area used for bird watching and native species education. The high-water levels along the Great Lakes basin have reinvigorated this area bringing new and exciting opportunities for growth.

PHYSICAL CHARACTERISTICS - SIGNIFICANT MANMADE FEATURES

The Village of Suttons Bay is located along the Lake Michigan shoreline making it a unique and desirable place to recreate. Two highways intersect the Village, M-204 running west, with M-22 running north & south along the Lake Michigan shoreline, and through the Villages’ commercial core. Most commercial retail development is centrally located within our vibrant downtown, and along the M-22 corridor. Industrial areas remain on the fringe of the Village providing needed, yet limited employment opportunities.

Residential development is mostly located in a traditional neighborhood grid pattern located in the immediate downtown area and consisting of historic homes dating back hundreds of years. These neighborhoods are still among the most sought-after residential homes in the region.

M-22 & M-204

The Village of Suttons Bay is divided by the historic M-22 (St. Joseph Street), which carries traffic north and south through our vibrant downtown. M-22 is one of three highways (M22/M204/M109) that, together, form the **Leelanau Scenic Heritage Route**. M-22 is also a part of the **Great Lakes Circle Tour**, a series of coastal state highways offering scenic views and recreational opportunities.

The M-204 highway is a 7-mile stretch of highway that connects M-22 east with M-22 west in beautiful Leelanau County. This highway begins in the Village of Suttons Bay and makes its way west, through Lake Leelanau and connecting with the North Manitou Trail.



Source: Michigan highways.org

LEELANAU TRAIL / US BIKE ROUTE 35

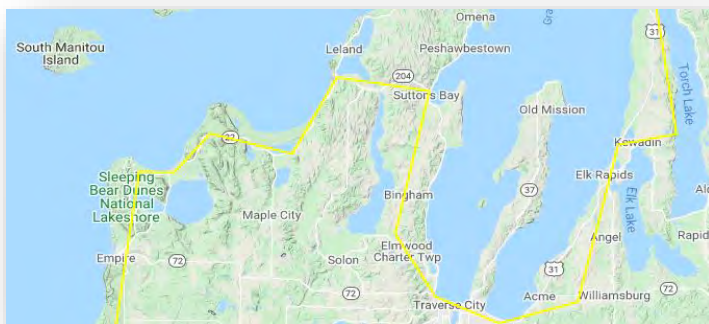
A gathering place for bicyclist of the Leelanau Trail is located on Fourth Street and offers parking, informational kiosk, and resting area for bikers as they enter the Village. The 17-mile Leelanau Trail connects Traverse City to our small, vibrant community of 600 residents. The trail provides a non-motorized escape for thousands of bicycling enthusiasts, of all levels, who simply want to hit the trail. This segment is among the most scenic sections of trails offering views of rolling hills, and orchards, as you traverse through forests, across streams and by the Leo Creek Nature Preserve.



Although most bicyclist do not want to leave our small community after a day of visiting our shops and restaurants, a partnership with the Bay Area Transportation Authority (BATA) provides bicyclist with a ride back to Traverse City as part of their Bike-n-ride program.

In the Winter, the Leelanau Trail is groomed for winter sports which include cross country skiing, snowshoeing and walkers with a separate trail for fat tire biking. The Leelanau Trail plows from first Street to Fourth Street through the Marina and out to Dumas Road for walkers.

A partnership with TART Trails and the Grand Traverse Band and the Village has allowed for the exploration of extending the trail from Dumas Road north to Peshawbestown. This joint effort will provide non-motorized opportunities for our neighbors and partner, the Grand Traverse Band of Ottawa and Chippewa Indians. Miigwech!



US BIKE ROUTE

LEELANAU TRAIL

The existing segment of the Leelanau Trail is also a portion of the US Bicycle Route 35, which extends 501-miles from Sault Ste. Marie to New Buffalo. A 2020 amendment request made by the Village and TART trails has moved the route away from downtown by one block. This shift provides a safer travel way for those who want to avoid the Villages busy downtown and get away from Traverse City at a quicker pace.

PUBLIC INVOLVEMENT

The Village encouraged early and often public involvement by way of open meetings, surveys, chalk boards located within our parks, and simple Q&A of groups and individuals alike. The following is a summary of common public sentiments and comments that were used to help shape the Goals and Objectives section of this Plan. There is an abundance of outdoor and waterfront recreation opportunities within the Village of Suttons Bay that attracts visitors and residents from this region. These opportunities have the potential to drive future growth of our park system while increasing the quality of life for our residents. While many interviewed supported the development or enhancement of recreation in our community, there appears to be a clear consensus that our current facilities and amenities are in need of improvement, replacement and/or modernization.

SURVEY RESULTS

The Village created and disbursed 450 surveys to Village residents, posted the survey on the Village website and provided additional opportunity for the local school and residents in Leelanau County to participate (Please see appendix A). Sixty-three (63) responses were received via either US Mail or website retrieval. Of those responses, 27 were Village residents, 12 Township residents, 14 from Leelanau County and 7 outside of Leelanau County. Of the 63 responses received, over half were received from individuals over the age of 55.

As a catalyst for building community, it is imperative that this plan is drafted in a manner that it encourages and promotes multi-generational interaction. Based on the results of the survey it was evident that we were lacking input from a very important demographic, teenagers. We partnered with the Suttons Bay Schools to distribute the same survey provided to our residents. The results were very impressive.

Suttons Bay Schools distributed an additional 140 surveys to students who took the opportunity to make a difference, which resulted in an impressive return of 104 responses or a 75% return! By involving the schools and giving the younger demographic a voice, we were able to improve the plan and gather ideas for advancing our park system. Interestingly, the students shared certain sentiments with other demographics, mostly about improving restroom availability, improving beaches and the need for upgrading park amenities. The students were adamant about improving recreational opportunities within our parks such as re-establishing beach volleyball, expanding swimming opportunities and providing concessions.

The most frequented waterfront park for those under the age of 24 was Marina Park, followed by another Lake Michigan park, Sutton Park. The most frequented inland park, by an overwhelming margin, was Waterwheel Park, due in part to the basketball courts. The respondents were asked what improvements they desired to see at the parks and provided valuable input used to create the Park Specific Recommendations.

Table 3 – Inventory Analysis

	Facility Standard per Population	Recommended for Village of Suttons Bay	Existing Facility	Standard Met?	Comments
Badminton	1/5,000	1	No designated courts known in area	No	
Basketball	1/5,000	1	Suttons Bay High School, Middle School & Elementary Gym. Waterwheel Park basketball courts	Yes	
Handball	1/20,000	1 for area	Several courts at GT Bay YMCA facility	Yes	30 Minute Travel Time
Ice Hockey	1/100,000 (indoor)	1 for region	Center Ice Howe (Civic Center)	Yes	30 Minute Travel Time
	Outdoor		Ice Rink Park	Yes	Ice Rink park is owned by Suttons Bay Township and located in the Village limits
Tennis	1/2,000	1	Waterwheel Park; Herman Park and the privately owned Suttons Bay Yacht Club and Bayview Condominium	Yes	
Pickleball		1	Waterwheel Park and Herman Park	Yes	
Volleyball	1/5,000	1	Suttons Bay School and Seasonally in Marina Park	Yes	
Baseball	1/5,000	1	Suttons Bay School	No	Middle School, High School and Summer League play
Softball	1/5,000	1	Suttons Bay School	Yes	Middle School, High School and Summer League play
Field Hockey	1/20,000	1	No known area public fields	No	
Football	1/20,000	1 for area	Suttons Bay High School Football Field. Various fields County wide	Yes	
Soccer	1/10,000	1 for area	Various Parks County wide, Herman Park and Deuster Suttons Bay High School	Yes	
Golf-Driving Range	1/50,000	1-2 for region	Several in the region	Yes	
¼ Mile Running Track	1/20,000	1 for area	Suttons Bay High School Track Field	Yes	
Multiple Recreation Court	1/10,000	1 for area	Miles Kimmerly Park	Yes	
Trails	1 system per region	1 for region	TART Trails Network	Yes	
Archery Range	1/50,000	1-2 for region	Cedar Rod & Gun Club	Yes	Located in Cedar Michigan
Combination Skeet and Trap	1/50,000	1-2 for region	Cedar Rod & Gun Club	Yes	Located in Cedar Michigan
Golf Par 3	n/a		Bahle Farms Golf Course	Yes	Suttons Bay, Northport and Cedar
9 Hole	1/25,000	1 for area	Northport Creek Golf		
18 Hole	1/50,000	3 for region	Manitou Passage		
Swimming Pool	1/20,000	1 for area	Northport Highlands-Indoor pool open to the public	Yes	
Beach Area	½ - 1-hour travel time		Multiple within Federal, State, County, and Local Parks	Yes	

GOALS AND OBJECTIVES

The following recreation goals and objectives were developed based on the outcome of public input and based on their understanding of the community and its residents. The Action Plan is informed by and reflects these goals.

GOAL 1. MAINTAIN AND IMPROVE OUR PARKS AND PARK SYSTEM.

Objectives.

- Install, replace and/or repair damaged benches, water fountains/stations and other amenities.
- Budget accordingly to allow for the continuous improvement of our park system.
- Seek supplemental funding sources to improve play areas, bathrooms, and universal access.
- Establish partnerships to incorporate cultural and artistic opportunities within our parks.
- Improve bicyclist leisure areas to promote and embrace our bicycling enthusiasts.
- Identify and prioritize funding for annual improvements to our park system.
- Install signage at our parks.
- Develop amenities in park facilities to include those identified by the Village as well as by residents through the public input process.
- Create educational opportunities at our parks.

GOAL 2. INCORPORATE CULTURE, HISTORY AND THE ARTS WITHIN OUR PARKS.

Objectives.

- Embrace and celebrate culture, art and artistic expression with our park system.
- Promote multi-generational interaction by allowing activities and experiences that can be enjoyed by all ages, such as plays and other entertainment.
- Develop facilities to meet the needs and ability levels of all park users.
- Incorporate Educational Signage.

GOAL 3. IMPROVE OUR PARK SYSTEM TO INCLUDE HIGHER LEVELS OF BARRIER FREE ACCESS AND ADA OPPORTUNITIES.

Objectives.

- Improve ADA accessibility at all Village parks.
- Provide for universally accessible play areas, picnic facilities and shelters.
- Incorporate signage within our parks to assist with way-finding, park connectivity routes and information about accessibility.

GOAL 4. IMPROVE & EXPAND OUR EXISTING NON-MOTORIZED NETWORK BY ENCOURAGING CONNECTIVITY AND WALKABILITY.

Objectives.

- Identify and pursue funding for additional sidewalks and trails to connect our schools, parks and the downtown district.

- Invest in non-motorized improvements throughout the Village to encourage connectivity with businesses, neighborhoods, existing parks and new pocket parks.
- Establish a partnership with M-DOT to invest in safe, family-friendly non-motorized crossings along M-22.
- Work with project partners such as the Grand Traverse Band, TART Trails, and neighboring communities to provide local and regional trail connections.

GOAL 5. PROMOTE PUBLIC AWARENESS AND USABILITY OF THE PARK SYSTEM

Objectives.

- Install park signs identifying individual parks and their relation to other parks.
- Create interconnectivity awareness and promote kids' events that utilize multiple parks.
- Promote the park system via the Village website, newsletter articles, and by including information about the entire park network.

SYSTEM WIDE RECOMMENDATIONS

In addition to capital investments, the Village of Suttons Bay must also evaluate the current system and review long-range options for providing parks and recreation opportunities. The following are system wide recommendations that should be evaluated annually and used in the long-range planning of parks and recreation.

- **BARRIER-FREE ACCESSIBILITY.** The Americans with Disabilities Act (ADA) has established guidelines to provide barrier-free accessibility at all public facilities. It is important to provide access to Village facilities according to these guidelines so that all residents may enjoy them. As parks and facilities are improved or developed, a high priority must be placed on upgrades that improve barrier-free accessibility including proper surfaces for wheelchairs, accessible picnic tables, and play equipment that provides universal access.
- **INTERGENERATIONAL INTERACTION BY WAY OF RECREATION.** Creating a balance of activities within recreational space that is shared by all demographics, is a key component to increasing the quality of life of our residents.
- **NON-MOTORIZED CONNECTIONS.** The Village is committed to providing non-motorized connections with pedestrian and bicycle pathways. The Village should continue to develop connections, particularly linking the parks, neighborhoods, schools, businesses, and areas of concentrated employment.
- **CONTINUED PUBLIC INVOLVEMENT.** The Village should continue to solicit residents' suggestions on planning, use, and improvement of parks and recreation facilities. This can be accomplished with focus groups, community chalk boards, public meetings, surveys, or through resident feedback solicited at Village events.
- **ACQUISITION OF PARK LAND.** Although limited, opportunities to acquire parkland should be explored for recreational purposes. Priority should focus on small parcels located within the Village and owned by private or public entities.

PARK-SPECIFIC RECOMMENDATIONS

General comment on the known function, challenges, and opportunities of the various village parks and natural areas are provided below. As time and funding allows, the Village will invest in park improvement plans for its various recreation areas.



BAHLE PARK

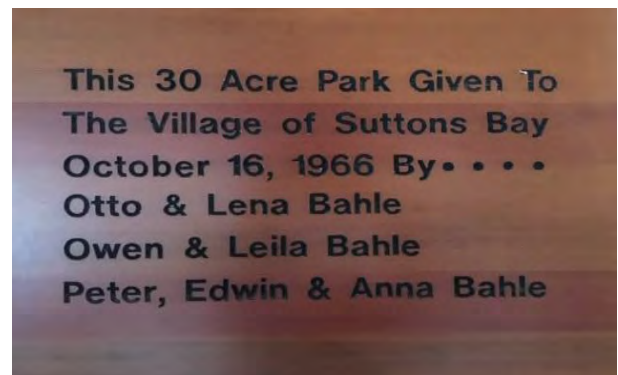
With the exception of the long standing and often used Bahle Hut, Bahle Park is intended to remain primarily in a natural state as an in-town opportunity for hiking, snowshoeing, foraging, nature watching, and sledding. The Bahle Hut was constructed in the 1970's in partnership with the local high school students and following a generous donation by past generations of the Bahle Family. Bahle Park offers a unique and exciting opportunity for improvement by incorporating educational opportunities, improving winter activities and encouraging year-round recreational use of this park.

FUTURE IMPROVEMENTS TO INCREASE THE USER EXPERIENCE INCLUDE:

- Improve year-round use of this property.
- Installation of a park sign and educational kiosks.
- Selective tree harvesting to improve sled hill.
- Continued maintenance of trails and markers.
- ADA implementation.
- Remove Abandoned ski lift equipment and structure



PHOTO CREDIT: Nate Porritt



COAL DOCK PARK

Coal Dock Park is a one-acre park at the south end of the marina, located at the end of Dame Street in the Village. Coal Dock Park includes a fishing pier, and picnic tables. A crushed limestone path provides access for bird watching, wetland habitat viewing and fauna studies. A bridge that spans the wetland area and connects Coal Dock Park to Marina Park has been removed due to safety concerns and slated to be replaced as funding permits. The Coal Dock Park provides a natural sitting area for those waiting to board the Inland Seas Schooner, an educational schooner that provides school children the opportunity to sail and learn about the Great Lakes. A fishing pier provides for multi-generational interaction and educational opportunities.



FUTURE IMPROVEMENTS TO INCREASE THE USER EXPERIENCE INCLUDE:

- Identify funding to replace pedestrian bridge with a permanent educational bridge for learning.
- Work in partnership with Inland Seas and area schools to develop educational signage.
- Shorten the gravel access road to expand the park and create more walkable areas.
- Seek funding for permanent park restrooms.
- Continue to install shoreline erosion measures to protect our fragile shoreline.



DEUSTER PARK

Dedicated for public use in 1914, Deuster Park continues to evolve as a recreational area. Remnants of the old softball field can be seen in the aerial photo to the right. Once reclaimed, that area will provide an additional U-8 soccer field. A partnership with the Leelanau Soccer Club in 2019 has caused a surge in the parks use. Deuster Park’s amenities now include four active youth soccer fields, recently updated restrooms, a storage barn and gravel parking area. The Leelanau trail runs parallel to the park providing a non-motorized opportunity for kids and adults



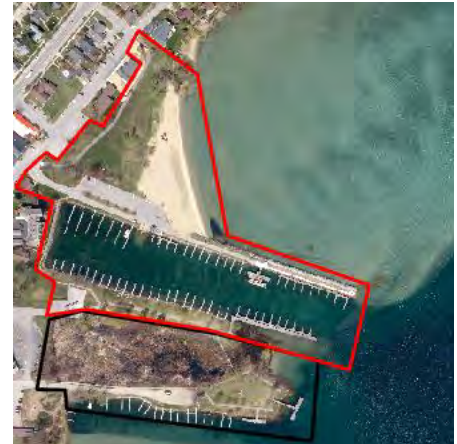
FUTURE IMPROVEMENTS TO INCREASE THE USER EXPERIENCE INCLUDE:

- Removing the neglected softball field to accommodate youth soccer as the primary sport at the park.
- Paving the parking area and installing ADA compliant walkways and seating areas.
- Encourage a shared roadway for bicyclists and provide a bicycle connection to the paved Leelanau Trail running parallel yet downhill from the park.



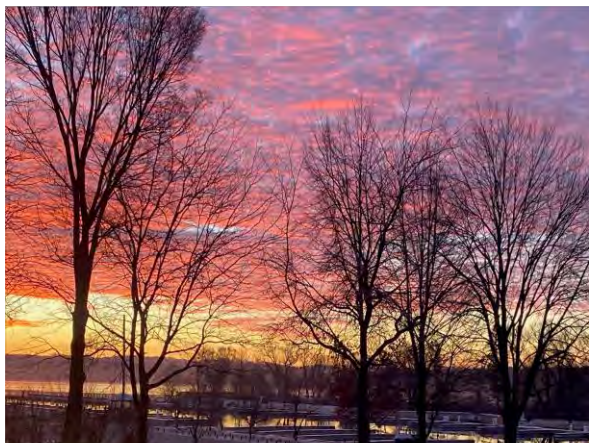
MARINA PARK

By far the most utilized park in our park network, Marina Park is located on the water and a block from downtown. A pathway provides access from the parking area to a mobility-mat offering improved access to the water for individuals of higher age demographic and/or those, with physical limitations. Evaluations of this park seem to coincide with public sentiment that this park biggest public need is to replace the restrooms. Although, these restrooms are clean and heavily used, they were constructed in the 1960's and lack modern conveniences such as changing stations and family restrooms.



FUTURE IMPROVEMENTS TO INCREASE THE USER EXPERIENCE INCLUDE:

- Identify granting opportunities to replace the bathrooms with more modern facilities.
- Plant water tolerant species of trees that thrive in high water tables.
- Designated drop off area for canoes, kayaks and paddleboards.
- Pavilion to be used for entertainment



NORTH PARK

North Park, mostly known as a Boating Access Site, was updated in 1995 in partnership with the State by way of a MDNR grant. This park is among the Villages most modern waterfront park and heavily used by boaters and picnickers. Amenities include a boat launch, parking, pavilion and public restrooms. The restrooms have been updated over the years ensuring ADA compliance is at the forefront of all improvements. North Park is used by Leelanau Farmer’s market, artists and an ideal location for festivals and events.



FUTURE IMPROVEMENTS TO INCREASE THE USER EXPERIENCE INCLUDE:

- A waterfront observation and seating area would provide a nice element for users to be on the water.
- Promote this area for waterfront picnicking.
- Continue to promote the use of this park for events.
- Separate launch area for canoes, kayaks and paddle boards.



SUTTON PARK

Sutton Park, is a well-known waterfront beach utilized by locals and visitors alike. Amenities at this park include bathrooms, a pavilion, playground, and swim area. Located at the entrance to the Village and accessed by M-22, this park is ideal for families longing for a safe and comfortable beach experience. The Village has identified this park as a high priority to incorporate or enhance accessibility for all ages and abilities.



FUTURE IMPROVEMENTS TO INCREASE THE USER EXPERIENCE INCLUDE:

- Install Park signage
- Install ADA compliant hard surface pathways and seating areas
- Relocate the gravel parking lot
- Construct a drop-off area for canoes, kayaks and paddleboards.
- Construct ADA play structure and activity area



DEVELOPMENT PLAN DESCRIPTION – SUTTON PARK

The following describes planned amenities identified in the attached plan for Sutton Park and derived by the public input process. The focal point of this waterfront recreation resource is to upgrade current amenities and increase waterfront recreation. The park has limited room for additional amenities, yet the intent is to formalize an Unimproved Water Access Area. The plan is further explained as follows:

1. **PAVED PATHWAY (ADA Compliant)**

An ADA compliant paved path is envisioned that would connect all existing and planned amenities.

2. **UNIVERSAL SEATING / OBSERVATION AREA**

Paved seating areas will be located throughout the park and will be accessed by hard surface pathways. An on-grade observation area is envisioned beachside.

3. **PARKING**

The current parking area lacks form and safe access. This area is to be reclaimed and planted to provide seating areas and lawn game opportunities such as Bocce Ball and other games.

A new parking area will be developed to include an entrance and exit, adjoining sidewalks and barrier free parking.

4. **ROADSIDE DROPOFF**

A roadside drop-off area for non-commercial kayaks, and paddleboards is proposed to be located on the curve of S. Shore Drive. This area has informally been used as a drop-off since the roadway running through the park was redirected away from the park in years past. Nearby residents and active users of the park have voiced their desire to formalize this drop-off area.

5. **KAYAK STORAGE RACKS/LOCKERS**

The inclusion of a locker will allow those traveling via water to secure their assets and utilize the non-motorized network to access downtown. Consideration will be given to the location of the kayak locker, which may be better served on the north side near the restrooms.

6. **INSTALL A UNIVERSAL PLAY AREA**

A universal play area is envisioned to provide users of all ages and abilities a waterfront recreational opportunity.

7. **IMPROVED WATER ACCESS**

Michigan Water Trails identifies this park as having no significant encumbrances for carry-in boat access. A goal of this 5-year plan will be to identify and plan improvements to water access for kayaks, canoes and other carry-down boats. The intent is to upgrade this location from an *unimproved water access* location to an *improved water access* location without interfering with swimmers.

See Map Gallery for Park Plan

WATERWHEEL PARK

The waterwheel feature was installed in 1974 and restored in the early 2000, with the assistance of local resident Bob Martinson. Accordingly, investment should focus on the historic aspect of the waterwheel, the park's natural features, and improving the stream and use of the park.

There are essentially three areas of this park that offer either passive or active recreational opportunities. These areas are separated by both natural and manmade features resulting in a segmented, rather than an interconnected park. The Village is focused on improving access, leisure and connectivity at this park by prioritizing the installation of hard surface pathways, seating areas and gathering space.



FUTURE IMPROVEMENTS TO INCREASE THE USER EXPERIENCE INCLUDE:

- Install Park signage
- Install ADA compliant hard surface pathways and seating areas
- Identify funding to preserve the waterwheel feature
- Improve the natural features of the park
- Create a pocket park with seating areas on the overgrown south east corner “wedge”
- Identify and include multi-cultural and/or artistic opportunities to incorporate into the park



Development Plan Description–WATERWHEEL PARK

The following describes existing and planned amenities at Waterwheel Park. This park, unlike any other park has sentimental value to locals. The wheel, built by the Martinson family has been in existence for generations and is beginning to exceed its life cycle. This area will be reclaimed to provide access and shaded seating and act as a pocket park. The following amenities were derived by the many forms of public input.

1. **CRUSHED LIMESTONE / PAVED PATHWAY** (ADA Compliant)
An ADA compliant crushed limestone and paved path is envisioned for the newest area of the park.
2. **CONNECTIVITY**
The inclusion of a bridge and walking paths are intended to connect the segregated park and will provide a safe and needed way to traverse the park and stream.
3. **STREAM RESTORATION**
Due to the high-water phenomenon, downcutting of the stream and undercutting of the banks has eliminated the natural floodplain and straightened the meanders. Discussions with the Michigan Department of Environment, Great Lakes and Energy (EGLE) representatives have been positive and supportive towards re-creating a flood plain area and re-habilitation of the stream.
4. **WHEEL RESTORATION**
The waterwheel is nearing its life-cycle and will need to be rehabilitated. This wheel is a very important aspect of the park and inclusion of the wheel in some fashion is a must.
5. **CULTURE, ARTS AND EXPRESSION**
This park is slated to be an intricate part of bringing community and culture together by reigniting the talent and passion for outdoor theater, book readings, multi-generational interaction and cultural expression. Seating areas, natural and otherwise will be incorporated to encourage those opportunities.

See Map Gallery for Park Plan



COMMUNITY RECREATIONAL ACTION PLAN

The Action Plan is a crucial step in the implementation process. The Goals and Objectives have been determined by the public input process and now we need to identify how to accomplish the task.



We have identified our parks, system-wide improvements, park specific improvements, and will now focus on the funding of those improvements.

This Plan will act as a checklist for improvements over the next 5 years. The Action Plan will help guide Staff, the Planning Commission and Village Council in addressing future recreational needs of all parks.

Potential projects have been identified both specific and generically to our park system, therefore, each action item on the project list relates to one or more of the goals from the Goals and Objectives section of this plan.

PARK SYSTEM ACTION PLAN

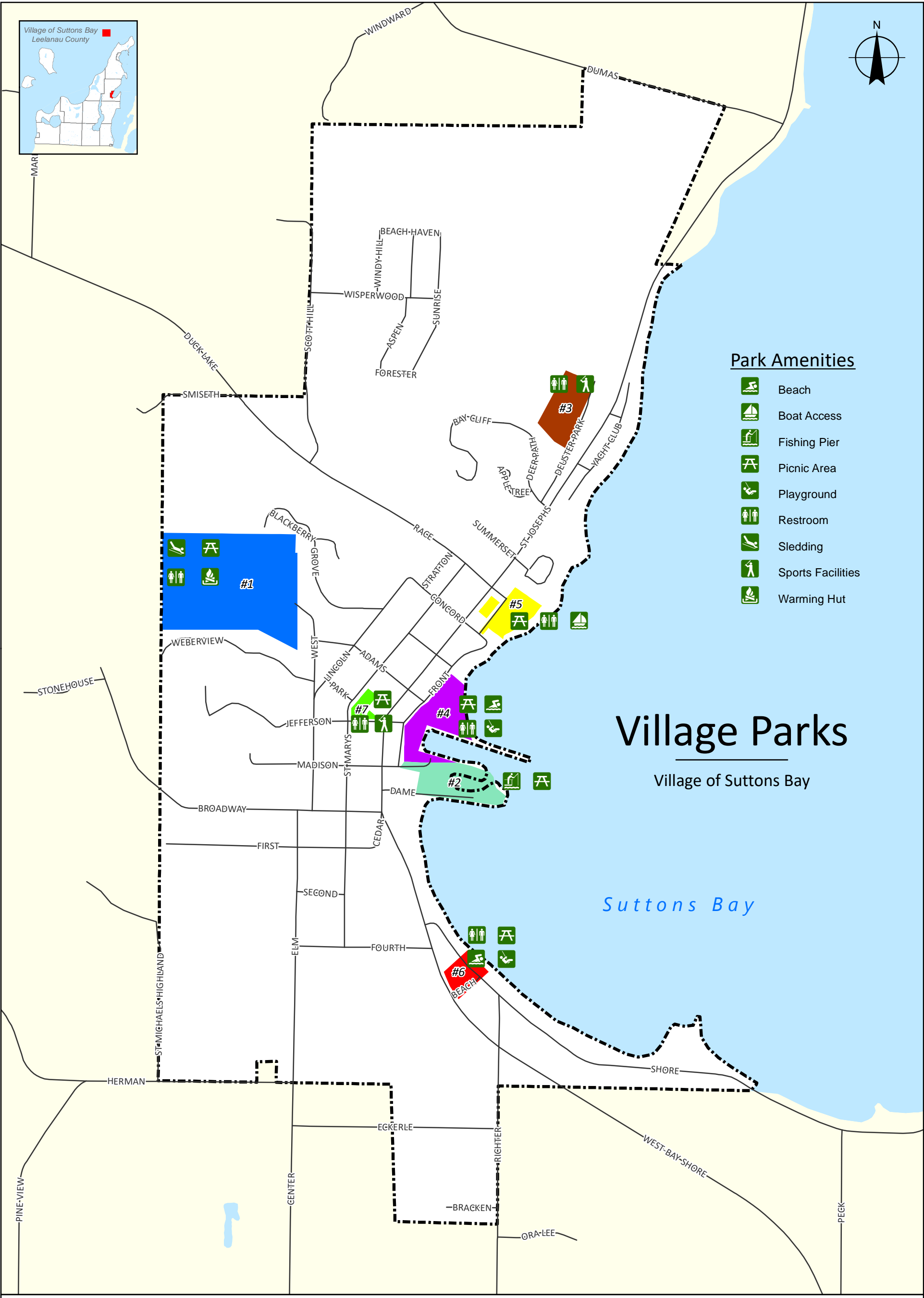
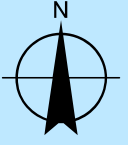
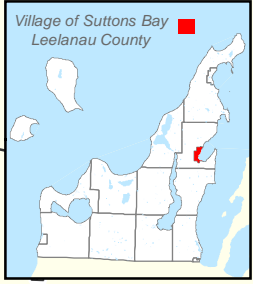
<i>Maintain & Improve Our Parks & Park System</i>	<i>Funding Mechanism</i>	<i>Timeframe for Completion</i>
Replace and/or repair damaged benches, water fountains and other amenities.	Annual Park Budget - Fund Raising	1- 5 Years
Improve play areas, bathrooms, and universal access.	State Grants - Annual Park Budget	3- 5 Years
Incorporate pocket parks and interconnectivity	State Grants - Safe Routes to School - Annual Park Budget	1- 5 Years
Improve bicyclist leisure entry areas to promote and embrace our bicycling enthusiasts.	Partnerships with Cherry Capital Cycling Club, TART - Annual Park Budget	2- 5 Years
Incorporate signage within our parks to assist with way-finding, park connectivity routes and information about accessibility.	Annual Park Budget	2- 5 Years
Create educational opportunities at our parks.	Local Grants - Partnerships with local educational entities including ISEA - Suttons Bay Schools - Invasive Species Network - Watershed Center	1- 5 Years

<i>Incorporate culture, history and the Arts within our parks.</i>	<i>Funding Mechanism</i>	<i>Timeframe for Completion</i>
Promote multi-generational interaction by promoting reading circles, outdoor theatre, cultural education and interaction.	Volunteer - Marketing - Annual Budget	1- 5 Years
Incorporate public art and display historic features	Volunteer - Marketing - Annual Budget - Local Partnerships	1- 5 Years
Create educational opportunities at our parks.	Local Grants - Partnerships with local educational entities including ISEA - Suttons Bay Schools - Invasive Species Network - Watershed Center	2- 5 Years
<i>Improve our park system to include higher levels of barrier free access and ADA opportunities.</i>	<i>Funding Mechanism</i>	<i>Timeframe for Completion</i>
Provide for universally accessible play areas, picnic facilities and shelters.	State & Local Grants - Annual Budget	3- 5 Years
Improve ADA accessibility at waterfront parks.	State & Local Grants - Annual Budget	1- 5 Years
<i>Improve & expand our existing non-motorized network by encouraging connectivity and walkability.</i>	<i>Funding Mechanism</i>	<i>Timeframe for Completion</i>
Identify and pursue funding for additional sidewalks and trails to connect our schools, parks and the downtown district.	State & Local Grants - Safe Routes to School - Annual Budget	2- 5 Years
Invest in non-motorized improvements by installing and replacing sidewalks to complete the grid pattern.	Annual Budget	1- 5 Years
Establish a partnership with M-DOT to invest in safe, family-friendly non-motorized crossings along M-22.	Partnerships - MDOT - Annual Budget	1- 5 Years
Expand the regional trail system to provide non-motorized opportunities for families outside of the Village.	Grand Traverse Band - TART Trails - Local Grants - Partnerships	2- 5 Years
<i>Promote public awareness and usability of the park system</i>	<i>Funding Mechanism</i>	<i>Timeframe for Completion</i>
Create interconnectivity awareness and promote kids' events that utilize multiple parks.	Volunteer - Marketing - Annual Budget - Local Partnerships	1- 5 Years
Promote the park system via the Village website, newsletter articles, and by including information about the entire park network.	Volunteer - Marketing - Annual Budget - Local Partnerships	1- 5 Years

MAP GALLERY

VILLAGE BOUNDARY MAP
VILLAGE PARK MAP WITH AMENITIES
NON-MOTORIZED ROUTES
WETLANDS
TOPOGRAPHY
SUTTON PARK PLAN
WATERWHEEL PARK PLAN

SEE ATTACHED MAPS BELOW



Park Amenities

- Beach
- Boat Access
- Fishing Pier
- Picnic Area
- Playground
- Restroom
- Sledding
- Sports Facilities
- Warming Hut

Village Parks

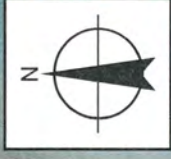
Village of Suttons Bay

Suttons Bay

1 inch = 900 feet

Village of Suttons Bay Parks

- Bahle Park (1)
- Deuster Park (3)
- North Park (5)
- Waterwheel Park (7)
- Coal Dock Park (2)
- Marina Park (4)
- Sutton Park / South Shore Park (6)



Non-Motorized Routes

Village of Suttons Bay

Suttons Bay

- ★ Trail Mile Markers
- Leelanau Trail (TART)
- - - US Bicycle Route 35

1 inch = 900 feet



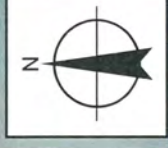
Wetlands

Village of Suttons Bay

1 inch = 900 feet

Wetlands data is derived from the National Wetlands Inventory (U.S. Fish & Wildlife Service)

 Wetlands



Topography

Village of Suttons Bay

1 inch = 900 feet

Suttons Bay

Elevation Above
Sea Level

50 Ft Contour Lines

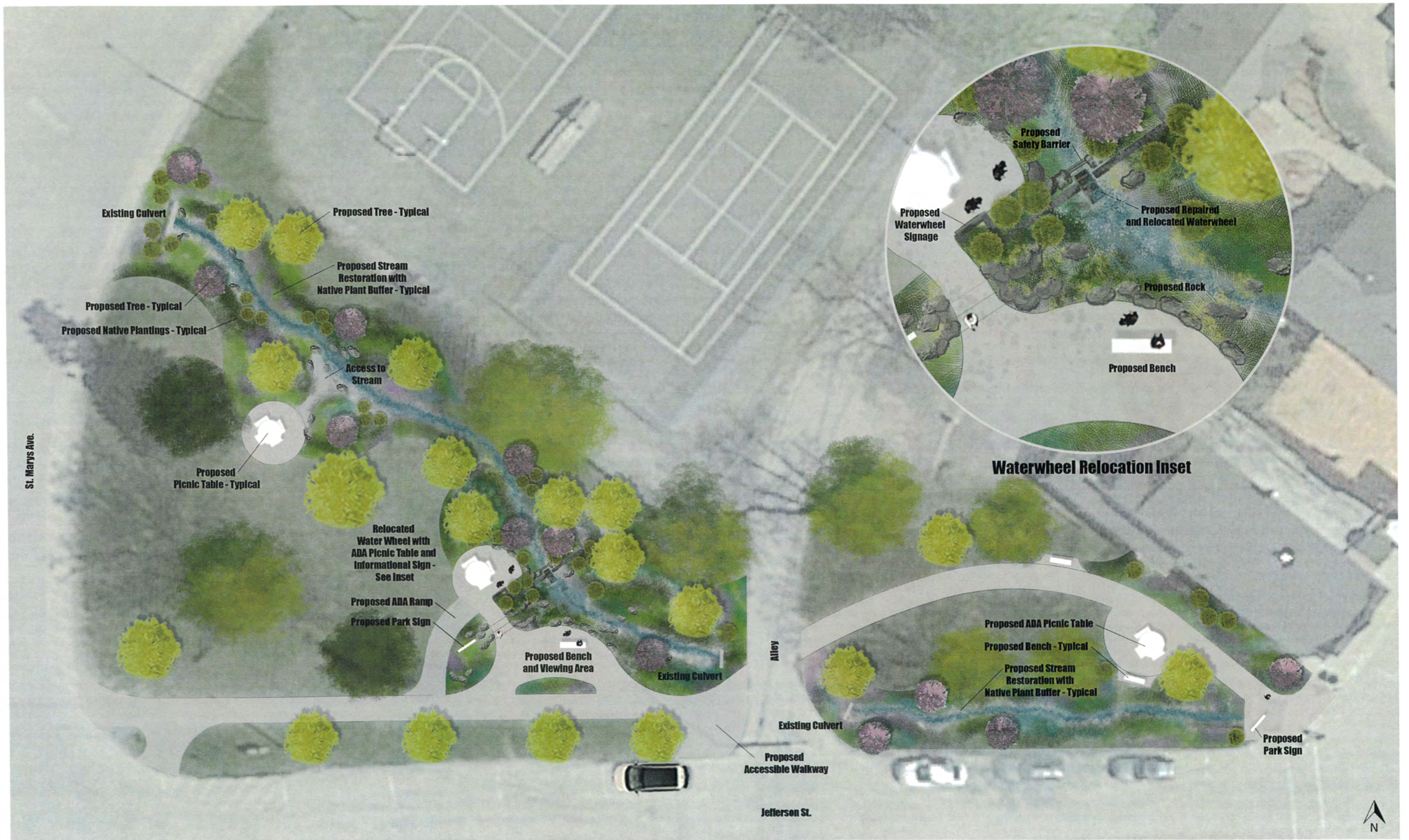
High - 850 Ft

Low - 600 Ft

Contour lines were derived
from a 2015 LIDAR flight
by Sanborn Mapping on
behalf of FEMA



SUTTON PARK CONCEPT PLAN



WATERWHEEL PARK CONCEPT PLAN

August 2020 | Not to Scale

*PARKS AND RECREATION
VILLAGE RESIDENTS
SURVEY RESULTS*

A survey was prepared and sent out in a newsletter to over 450 residences and businesses. In addition, the survey was posted on-line on the Village website, as well as links provided to the Suttons Bay Schools and the Overheard Around Leelanau Facebook page. 63 Responses were returned either by U.S. mail; dropped off at the Village office; or responses through the on-line link. Please keep in mind not every respondent answered each question. The report below will take you through each question (which is italicized) along with the responses received.

Are you a Village Resident?

- 27 Responses were from Village residents
- 33 Responses were from those living outside the village.

If you are not a Village Resident, please select the answer below that best describes where you live:

- 12 responded they lived in Suttons Bay Township
- 14 respondents did not live in Township but in Leelanau County
- 7 respondents lived outside of Leelanau County

What is your age?

The following age brackets were provided with the corresponding response.

Under 18	6
18-24	2
24-34	6
35-44	7
45-54	7
55-64	15
65+	17

Which Waterfront Park do you frequent the most? The following choices were offered and responses listed.

North Park Marina Park South Side Marina Park Coal Dock Park South Shore Park

- North Park 2
- Marina Park 32
- South Shore 17
- Coal Dock 6
- South Side Marina 1

What improvements would you like to see at this park?

The following is a list of improvements that the respondents would like to see at the following parks:

North Park

- More enforcement of vehicles being parked there without boat trailers attached.
- No improvements. My few trips here have been nice.
- Fish cleaning station; if you are closing the Marina Boat launch add a second set of boat launch ramps to North Park; This gets very busy in the summer prime time-two docks with 4 launch ramps would help.
- North Park-the biggest improvement I would like to see is a baseball diamond and a basketball court.

Marina Park

- A permanent band shell similar to that in Charlevoix.
- This place is amazing
- Plant some trees
- Place to wash sand off feet, splash pad, nicer bath house for the marina
- More garbage receptacles; inspect play structure regularly for safety; any way to create a drier grassy area?
- I honestly can't think of any. This is such a gorgeous park and always looks great. The village staff does a great job maintaining it and it always looks great. I really appreciate the latest improvements! It seemed like there was less goose poop as the season went on. Is this the result of your clean up? If so, thank you - it was appreciated
- A cleaner sandy beach...
- Not so soggy grass, always seems to be wet down there.
- Public restrooms and solving the beach mess
- More playground equipment and the picnic tables and benches to be out
- Parking, Beach area.
- Grass leading up to beach needs new soil/fill. Very mushy and wet all year long.
- Plant some trees

- Foot bath for beach users
- Place to wash sand off feet-splash pad-nicer bath house for marina
- Need more lighting between boat slips and South Side Marina Park.
- If there were more willows and dogwoods etc. planted the ground is wet (grassy area) it would be good for ground, could even be a natural playground or benches could be there for a nice shady place to sit. There is a willow fort at Children's garden behind library in TC for reference.
- Willow trees planted-handrail access between library and village hall
- Better quality sand, more shade trees, pavilion for events
- Storm washed up rocks covering sand beach on North end. Remove rocks to get sand beach back.
- Fishing Pier-Prevent vessels from docking at the fishing pier. Keep this open for general public enjoyment.
- The park often floods. I would like to see some water wicking plants or a drain.

South Shore Park

- I'd like a paved trail through the park.
- A trail through the park and a sidewalk from the parking lot to the trail.
- I can't think of anything that could improve South Shore Park.
- I would love to see soap in the restrooms and working drinking fountains!
- I'm comfortable with the condition of this park. It's a wonderful space. Perhaps upgrade the playscape equipment...
- Cleaner beach
- Better parking and paved trail
- In the summer the beach groomed more often. I realize the water levels are higher but with what little sand there is it would be nice for it to be clean of debris.
- Groomed beach and updated bathrooms
- We need to pave a walking/bike path from the South Shore Drives thru the park. There is already a worn trail that should be paved like we have on the bike path north of the marina.
- Soap in the public bathrooms, and combing/sweeping of the sand area of the beach. It has bothered me for several years that there is a bathroom with a sink and hand dryer, but no soap. The amount of families that use the restroom, and then eat a picnic lunch but can't wash their hands is crazy! It makes the township look bad/cheap. I visit public beaches all over the state, and we have the only one that the sand doesn't get maintained. This makes us look really bad too.
- Nothing, I like this park.
- Nicer sand with a deeper beach area, Nicer paths and Sidewalk connecting to downtown
- Deeper water & less rocky

Coal Dock Park

- A new bridge between South Side Marina Park and the Coal Dock Park. The bridge should be wide enough for two people passing each other and a bike.
- Trim off low branches from trees on both sides of the present bridge.
- Improve water bridge connecting marina.
- Add better seating on dock

South Side Marina

- More picnic tables
- Water, at least just a spigot to fill water-coolers or bottles for drinking.

The respondents were then asked to Identify your top five (5) improvements for these parks. The answers received often identified more than one park or restated their previous response. Often an idea encompassed more than one park. Those are identified under General park improvements. Below is a list of the Waterfront parks and the improvements listed:

North Park

- More bathrooms
- Add Benches to sit closer to water
- Beach access
- Only one of those overhead railings and take out the rest
- Picnic tables
- Add bike racks
- Basketball court
- Anchor dock at North Park south of boat launch
- Add trash cans
- A Skate Park
- Add village and Bike Maps and a fish cleaning station.
- Baseball diamond
- I would like to see a place by the fishing area on the dock to dispose of fishing line so that it doesn't fly into the water. It would also be nice to have a drinking fountain.

Marina Park

- Walkway access from coal dock to south side
- Pea Gravel from foot/bike path @SW corner of main marina.
- Plant red twig dogwoods between the parking areas and dune grass.
- Plant water tolerant trees at Marina Park-lots of them

- Better drainage at marina park
- Parking back at the marina lot to the beach
- More willows and take out the failing maples
- More Willows planted at Marina
- A water hand pump. Create a drainage area.
- Remove the trash from the shore
- Upgrade/replace boardwalks at southside marina park
- Deeper swim area
- Park-Pavilion
- Let grasses "weeds" grow along the boardwalks towards flags. Help with goose poop and be pretty.
- Southside marine-love the wetland-maybe replace the bridge
- Let more natives grow in water run off area, naturalize that area behind the birch, more biodiversity good for water quality.

South Shore

- Trail at South Shore, parking back at the marina by the launch for park visitors.
- Paved trail
- Bike Path as mentioned above.
- "Combing of the beach multiple times throughout the summer to clear up the debris that washes ashore.
- Hand soap in the restrooms
- Have the spicket on the bathhouse in working order that is there to rinse your feet off. "
- Water (drinking), Bike-friendly access/ racks, Recycling bins
- Public restrooms updated and closed later and opened earlier in the season.
- Deeper water and less rocky.
- Newer bathrooms
- Drinking water
- Fix water fountain at South Shore park.
- Wider Beach
- Marina-Grills
- Improved parking
- Pave path through South Shore Park
- Improve bathrooms
- Paved access road
- Add pavilion for picnics etc.
- Paved parking lot
- Bathrooms/Beach House-Paved parking
- Armor the eroding banks at South Shore

Coal Dock

- Leave the coal dock alone, but repair the bridge
- Bathrooms
- Parking

General Improvements

- I can't think of anything that could improve these parks.
- Soap in restrooms, drinking fountains, recycle bins, easy access to the water for paddle boards and kayaks.
- I only really have one thing to add (doesn't matter which park this improvement would be at). I feel that Suttons Bay does a great job in providing various access points to the lake/bay. It's really nice to be able to get to the water without spending a fortune or fighting for a parking spot. That said, I'd love to see some sort of waterfront center focused on programming and/or activities for water sports. This would be for kids and adults of all ages and include programs/services for water activities like sailing, paddling, canoeing, kayaking, swimming, and /or any outdoor recreational activity. Basically, rather than improve structure and facilities, let's put some money into programing/services that build community.
- Cleaner beaches, cleaner restroom facilities
- Build a bocce ball court(s) at either marina or coal dock park
- Better accessibility to drinking fountains to promote reusable water bottles and less plastic.
- Signs to promote recycling and better access to trash/recycle receptacles
- This is for all parks: There are a lot of dog walkers in the area. It would be nice to have refuse bags and disposal areas. The one I know of is by the village office. Maybe the owners would be better at disposal if there were more of these areas.
- More perennials planted, bird feeders
- Beach improvement
- Public restrooms
- No dogs.
- Playground equipment
- More benches
- Picnic tables out
- Bathrooms, Pathways, Landscaping, Playground Equipment
- Herman Park - part of township. More Pickleball Courts.
- Trail at South Shore, parking back at the marina by the launch for park visitors.
- Paved trail
- Bike Path as mentioned above.
- Combing of the beach multiple times throughout the summer to clear up the debris that washes ashore.
- Hand soap in the restrooms
- Have the spigot on the bathhouse in working order that is there to rinse your feet off.
- Water (drinking), Bike-friendly access/ racks, Recycling bins
- Public restrooms updated and closed later and opened earlier in the season.

- Year-round bathrooms opened somewhere
- Keep restrooms open longer
- Turn the swing sets to face water.
- Hand rail access between library and village hall
- Plant real shade trees, not just tiny ornamentals
- Paint facilities where needed-Doors
- BMX park
- Basketball park

The respondents were asked to then identify which Inland Park do you frequent the most? The following responses were offered:

Bahle Park Waterwheel Park Deuster Park

- | | |
|-------------------|----|
| • Bahle Park | 18 |
| • Waterwheel Park | 27 |
| • Deuster Park | 1 |

The respondents were then asked what improvements would you like to see at this park? The following is a list of improvements that the respondents would like to see at the following parks:

Bahle Park

- Mow the hillside to keep brush and plant growth low for winter activities. Removal of the old ski lift machinery and shack at top of hill would provide a turn around space for a tractor mower.
- The warming/activities hut should be named with sign attached to it. A map of park boundary that outlines its footprint and the ridge trail posted inside and or outside. Improve the bottom of the hill with safety in mind to funnel sledders away from trees.
- The sledding hill is fantastic, but I do have some concerns about safety with trees/stumps very close to embankments. I've seen many close calls on the hill and would feel better if there were some safety measures in place to keep sleds out of the woods. Also, it sure would be awesome if there was a way to ride back up to the top of the hill...probably not very practical, but I can dream, right?
- Rehab of the warming hut
- Make sure trails are clear for walkers.
- Open Ski Hill
- Events held at warming house with ices on the trails
- More trails
- None
- A covered pavilion and picnic tables. I would also say public restrooms, but I think I just read that there are now porta-potties there.

- Downhill ski/sledding
- Interpretive signage throughout the trails so we can learn about flora and fauna of the woods.
- Signage, maybe a map with the trails on it.
- I can't think of any improvements for Bahle Park.

Waterwheel Park

- Add more benches to sit and toddler playground for smaller kids
- Waterwheel Park-Peace poles in all parks
- Fix waterwheel and stream
- Benches
- More picnic tables and benches.
- Make the upper part more of a user-friendly gathering spot - some seating maybe
- Maybe a dog cleanup station? Or a bench by the water wheel?
- Drinking fountain?
- More seating
- More seating. Benches and picnic tables
- Nothing
- Bathrooms
- More picnic tables and benches

Deuster

- Cut grass more frequently, sometimes weeds are a foot tall; More picnic tables-one is not enough; More garbage cans-one is not enough-Fix baseball diamond so it can be used for softball, more uses other than soccer; don't fill parking lot with snow from village during the winter; parking during soccer games needs to improve.

The respondents were then asked to Identify your top five (5) improvements for these parks. The answers received often identified more than one park or restated their previous response. Often an idea encompassed more than one park. Those are identified under General park improvements. Below is a list of the Waterfront parks and the improvements listed:

Bahle Park

- Porta John Year Round
- Maintain trails through Bahle Park
- Brush cut sledding hill
- More bathrooms
- Fresh water for drinking
- Open Ski Hill lift

- Keep park natural; prevent neighbors from encroaching by dumping leaves, "cleaning up" the brush and trees. Maintain natural state of the forest.
- No other feedback
- More trail options, Better maintained trails
- Yearly cleaning of debris on the hill prior to winter. There are always a lot of branches and limbs on the sides of the hill. Picnic Tables, Covered Pavilion
- Not sure. I'd definitely like to see these parks utilized more by everyone.
- That might mean hosting public events at the parks to get more people out there.
- Rehab of the warming hut
- Make sure trails are clear for walkers.
- Mow the hillside to keep brush and plant growth low for winter activities. Removal of the old ski lift machinery and shack at top of hill would provide a turn around space for a tractor mower. The warming/activities hut should be named with a sign attached to it. A map of park boundary that outlines its footprint and the ridge trail posted inside and or outside. Improve the bottom of the hill with safety in mind to funnel sledders away from trees.
- Events held at warming house with bikes on the trails

Waterwheel

- Add play structures
- Permanent bathroom
- Are there invasive species
- Fix the water wheel and paint it or something
- Skate park
- Plant trees and native grasses (flowers along the waterwheel stream bank).
- Willow Trees in Water Wheel Park
- I can't think of any improvements for these parks. I believe that they all just need to be maintained. If something is broken, then it needs to be fixed or replaced (and that is what currently happens). Maybe one thing that could be added would be bike racks to make it convenient to park and lock a bike if desired.
- Benches picnic tables
- Bathrooms, Pathways
- More benches to sit
- More Trees would be nice at waterwheel
- More picnic tables and benches at Waterwheel Park
- Waterwheel-Make the upper part more of a user-friendly gathering spot-some seating maybe
- Add more benches to sit and toddler playground for smaller kids

Deuster

- Cut grass more frequently weeds are a foot tall at times
- Improve walking access to Deuster Park-very dangerous when soccer events are held there.
- More events-soccer, baseball, something

Appendices A

- More picnic tables-one table is not enough
- More garbage cans-one is not enough
- Better parking
- Fix baseball diamond-so it can be used. Softball-more uses than just soccer.
- Stop piling snow there creates garbage sand piles.
- Don't fill parking lot with snow in winter. Improve parking during soccer games.

General Improvements

- Functional Bathroom at all parks
- Picnic benches
- Recycling Barrels all parks
- Playground equipment to attract kids to parks
- Batting cage
- Trash Cans
- More hiking trails on village lands
- Drinking fountains
- Village Map/Bike Path Map
- Parking lot light off earlier in am
- Basketball hoops
- Toddler Playground

The respondents were asked, do you feel that the existing parks are adequately maintained?

- No 9
- Yes 50

The respondents then were asked if you answered no to the preceding question, can you tell us what you think that the Village could do to improve maintenance?

- Mow on Fridays
- Mowed more often.
- The DPW department is the best ever.
- I'm a frequent runner/bike rider, so bathrooms and drinking water are tops on my list. Keeping bathrooms fully stocked, clean, and operable is pretty much all I could hope for.
- Plant flowers. Put mulch around trees.
- I put that information in my answers above. Obviously, staffing is limited, but keeping our beaches top-notch is a major priority.
- Clear trails
- Cut the grass more so it can be used-weeds are a problem. Keep it nice so it will be used.
- Improve parking lot at warming hut
- A public map that names each park, location, hours open, village office contact. Each park name should be posted at each location. A master map of all parks outside of the village office. This master map should include and reference the three Suttons Bay Township properties within the village of Suttons Bay; Ice Rink Park, Herman Community Park and the Township land adjacent

to the Catholic Cemetery, the TART trail and the Trail head parking should be part of this Master Map.

- We do spend \$750 Billion dollars for the military can we spend \$50 for Peace.
- Paint where needed.
- They can take more ideas by looking at what the people are doing in the parks

Lastly, the respondents were asked what improvements would you like to see at parks you don't visit often? Please identify the park (or parks) and the improvements you'd like to see.

- I'd go to the Marina Park if there was parking down below.
- A public map that names each park, location, hours open, village office contact.
- Each park name should be posted at each location.
- A master map of all parks outside the village office.
- This master map should include and reference the three Suttons Bay Township properties within Village of Suttons Bay: Ice Rink Park, Herman Community Park and the township land adjacent to the Catholic Cemetery.
- And the Tart Trail and Trail Head Parking should be part of this master map.
- More parking
- I think we should have a really nice fenced in park for kids with a splash pad and we should also have a fenced in dog park also pavilions and picnic tables maybe a walking track around these parks
- Covered Pavilions at the Marina Park would be great!
- Beach at the southern side of Marina park area. The restrooms there could make it a nice area for families to visit and relieve congestion at the other park
- I think I would visit more of the village parks if there were things that I liked using there.
- What about creating a fitness loop around the village? Add those calisthenics workout apparatus stations, a few at each park, then I would visit them more, jog or walk around the village to the different parks.
- I would leave that to someone who uses the other parks
- More picnic tables at South Marina Park by parking lot and trash cans. People don't have anywhere to sit or eat when they get takeout.
- Waterwheel-permanent restroom facility, renovate creek and waterwheel-parking along street (Lincoln) (maybe meant St Mary's)
- A peace pole in all parks.
- Fenced for dog park
- An improvement would be to have better maintenance
- Signs showing each park at each park like they have in Northport.
- Needs to be talked about more like ask to go to that park

*PARKS AND RECREATION
SURVEY RESULTS
(Suttons Bay High School)*



2022-2026 PARKS AND RECREATION PLAN SUTTONS BAY HIGH SCHOOL SURVEY RESULTS

With only 63 responses received from our initial survey that that was sent out in a newsletter to over 450 residences and businesses, posted on-line on the Village website, as well as links provided to the Suttons Bay Schools and the Overheard Around Leelanau Facebook page, we felt it imperative to reach back out to the local School to ask for their assistance. Surveys were provided to the School on February 20, 2020 and we completed by March 4, 2020. The report below will take you through each question (which is italicized) along with the responses received. Again, not every question received an answer.

Are you a Village Resident?

- 19 Responses were from Village residents
- 86 Responses were from those living outside the village.

If you are not a Village Resident, please select the answer below that best describes where you live:

- 35 responded they lived in Suttons Bay Township
- 49 respondents did not live in Township but in Leelanau County
- 4 respondents lived outside of Leelanau County

What is your age?

The following age brackets were provided with the corresponding response.

Under 18	92
18-24	10
45-54	2

Which Waterfront Park do you frequent the most? The following choices were offered and responses listed.

North Park Marina Park South Side Marina Park Coal Dock Park South Shore Park

- North Park 5
- Marina Park 49
- South Shore 10
- Coal Dock 36
- South Side Marina 6

*What improvements would you like to see at this park? The respondents were then asked to identify their top five (5) improvements for these parks. The answers received often identified more than one park or restated their previous response. Often an idea encompassed more than one park. Those are identified under General park improvements. Below is a list of the Waterfront parks and **all** improvements listed:*

North Park

- Water Play Structure
- Volleyball Court
- New Boat Launch Dock
- More Parking Spots and Cleaner Bathrooms
- More Trees

Marina Park

- Better parking, new picnic table, volleyball nets, more boat docks
- Bathrooms
- Vending machines, water fountain, cleaner beach and more parking
- Let wet areas, less rocky sand, better volleyball court, more parking, water sport rental
- Less glass in sand, more parking for people who don't have boats, less flooded areas, volleyball court improved, paddle boat rental
- More swings, volleyball net improved, more smooth sand, water sport rental, less flooded area
- Better bathrooms
- Water park, community pool, more swings, exotic play structures
- I like them how they are
- Water park
- Everything better
- Waterslide, rentable rafts, paddle boats, free paddle boards
- Better playgrounds, better bathrooms
- New park better water
- Clean up dog poop, clean the marina, respect the park, clean your trash
- Nasty gunk at bottom of marina, nicer benches, better swings, a ladder to get up the docks
- Better bathroom facilities and cleaner
- Food Stands, less pollution, more room, more picnic tables & drinking fountain
- Food Stands
- Less goose poop and better bathrooms
- New bathrooms, new park play area and drinking water
- Snack stands, less pollution, less trash, more swings
- Clean restrooms
- Basketball, tennis and kickball courts

- Add a trampoline, skatepark and more docks
- Cleaner better bathroom facilities
- Less bird poop, better porta potty, cleaner beach, fix up docks, add more trash cans, make it look appealing
- New marina docks, pay employees more
- Better grass, dog park, new playground and more sand
- More garbage cans to reduce litter
- More activities and things to do
- Better play structures
- Better bathrooms
- I like the suggestion chalkboards in the park
- Basketball, tennis, place to eat
- Outside gym, sidewalks
- Improve restrooms
- Bathrooms, new volleyball net at Marina Park
- Basketball hoop and water fountains
- No littering
- Leave volleyball net up
- Improve sand, cleaner beaches, better volleyball court/net, reduce swampiness and cleaner bathrooms. Cleaner overall
- Volleyball net and cleaner bathrooms
- More beach, better playground, better healthier grass, better bathroom and picnic table
- Nicer beach, new swings, nicer yard, volleyball court net, bathrooms
- More sand
- Nicer beach, more grass, less swamp
- Better restroom closer to beach, nicer beach, cleaner grounds, more scenery

South Side Marina

- More space
- Chalk Boards
- Less goose poop
- No trash, more benches, vape shop, ice cream shop
- Bathrooms
- Swing set, more sand, Park, bigger beach, deeper water

South Shore Park

- Better playground and cleaner bathrooms
- Better bathrooms
- Nothing
- More tables, improve swings, more grass
- Better bathrooms

- Walking paths better parking, chalkboards, no weedy plants
- Improve the beach and playground
- Less rocky water
- Better swings/slides
- Clean the bathrooms more frequently

Coal Dock Park

- Improve bathrooms, new dock for boat launch
- Food Stands, less garbage, extended beach, more playgrounds, more wildlife, less trash
- Bathroom by the coal dock
- Less people more benches
- No gravel it hurts my feet, more trash cans, less goose poop, bathrooms closer to docks
- No sign saying we can't swim. Just sign it saying to be careful so people don't get mad about us jumping in
- Maintain the posts that keep the docks up. They are starting to lean.
- Bathroom by the coal docks, cleaner beaches, bridge by coal dock, clean up goose poop
- Add food stands
- Give water to Africa
- No electrical things in water so we can swim there
- Fine the way they are
- None. Good enough
- Garbage cans, playsets for kids, places to sit, a building to go in when its cold
- Bathroom facility
- No geese, let us jump in, ladder to get out of water, no Ecoli, water fountains, better bathrooms
- Better bathrooms, better docks, clearer water
- Better bathrooms, water fountains, cleaner
- Ladder, better picnic tables, plant flowers, trash cans, water fountains, better bathrooms, bike holder
- No seagulls, no geese, no Ecoli, no smelly water, water fountains
- Water fountains, better bathrooms, no littering, accessible doggie bags, fishing dock, make it a sock we can swim off of
- Water fountain, less geese, less garbage on the ground, ,ore garbage cans, ,ore trees, cleaner bathrooms
- Diving board, no nails
- Power wash the docks, hit the nails back in, it looks bumpy
- Allow swimming
- Legalize jumping off docks
- Lee bird poop, more tables, more inviting for kids
- Less geese attacking me, huge slides and diving boards
- Being able to swim there more or legally and a new bridge along the swamp area
- Allow diving and add a jump board
- Bathrooms at Coal Dock; dog waste bags, new tables

- Diving board on dock, make it legal to swim
- Trash Cans, recycling cans, real bathrooms, water fountains
- Better dock at boat launch, easier access to water, redo docks
- Nicer beach, make it NOT illegal to jump off, bathroom and playground
- Legalize the docks, swings and build a ladder
- Higher docks, make the docks legal
- Get rid of the rocks, allow jumping off the docks, put a ladder on the dock
- Need bathroom
- Higher dock, ladder on the dock, more flowers
- New railings, frequent cleaning, ladder for coming back in, cleaner bathrooms
- New railing and frequent cleaning, bathrooms

The respondents were asked to then identify which Inland Park do you frequent the most? The following responses were offered:

Bahle Park Waterwheel Park Deuster Park

- Bahle Park 14
- Waterwheel Park 70
- Deuster Park 3

*The respondents were then asked what improvements would you like to see at this park? The respondents were then asked to Identify your top five (5) improvements for these parks. The answers received often identified more than one park or restated their previous response. Often an idea encompassed more than one park. Those are identified under General park improvements. Below is a list of the Waterfront parks and **all** improvements listed:*

Bahle Park

- Fine the way it is
- More room in hut, add food stand in hut
- Clear second hill at Bahles
- Water fountain, recycling bins, trash bins, better washroom
- Better looking
- Walk easier, cool signs, more trailways to connect, kid friendly place, less pines
- Water fountain, bathrooms, mow disc gold course (Herman Park?)
- Benches, real bathrooms, water fountain, mountain bike trails
- More things to do, leave the warming hut unlocked

- Bathrooms, faster hill, better sledding
- More flowers. Make it look nicer

Waterwheel Park

- New picnic tables
- Restroom, drinking fountain
- Fence around basketball hoop court, water fountains
- Bigger river, bathroom, food stand, a little bridge, less trash
- Clean Environment
- More walking area, bike rack, drinking fountain, more areas to sit, wider court
- Updated basketball hoops, update tennis court, drinking fountain, benches and street lights
- Bigger basketball court, drinking fountain, benches, bike rack, street light to play sports at night
- Add more things to do, another basketball court, bathrooms, safe drinking water, more places to sit
- More trees for shade
- More places to sit, more activities to do (courts) and different stuff, better tennis courts
- Playground, water park, everything
- A skate park; two bridges
- A geocache near park, better tennis court
- More outdoor activities, tennis more eating areas
- Lights
- Add a playset, a good slide, a good swing set, a soccer field fenced in, nicer grass
- Swings, more play stuff, dog park, playground
- Nothing
- Better basketball hoops
- Improve tennis court, more flowers planted, more tables, better basketball hoops
- Need a tennis net, needs water fountain, better porta potty, more places to sit and better basketball net
- Water fountains, more lights, better hoops, better porta potty
- Bathrooms
- Light up the basketball court, need water fountain
- Safe and clean
- Tables, bathrooms, water stand, flowers trash cans, better place to take pictures, more parking
- Improve tennis court, water fountain, bathrooms, trash, cleaner
- More things to play on
- Dog waste bags, replant grass, , mow around the stream, paint the wood above the waterwheel
- Water fountains, picnic tables, bathroom
- Make it look nicer
- Expand the basketball courts, repaint the courts, expand the court
- Get better hoops for basketball, new tennis court, a new waterwheel, more things to do
- Bigger wheel
- Fix around the waterwheel, put lights there

- Everything is perfect
- More seating
- Fence between tennis and basketball courts
- More variety, stairs for walking up
- More hoops and basketballs
- The hoops make it perfect
- Gardening, a bridge, fresh grass
- Repaint, garbage cans, new hoops/nets and cleaner
- Repaint, put in bathrooms, more trash cans, new nets for basketball court
- Benches, bathrooms and swings
- More benches
- More touchups
- Bathrooms, more courts, dog park, more play grounds
- Bathrooms, better scenery
- Nothing
- Bigger basketball courts
- Cleaner grounds, more screening
- Bigger, more wings, slides, add wood chips, a jungle gym
- Better landscaping, swing-set, more picnic tables and places to sit.
- Picnic tables, more flowers and more places to sit.

Deuster

Clean the park. Don't throw trash.

The respondents were asked, do you feel that the existing parks are adequately maintained?

- No 16
- Yes 41

The respondents then were asked if you answered no to the preceding question, can you tell us what you think that the Village could do to improve maintenance?

- Can be more aware and cut the grass
- Check on waterwheel more
- Mow parks more frequent
- More like a village (?)
- Fix Potholes
- Trim some bushes
- Not clean enough
- New roads and fix potholes. Sidewalks could use some help
- Cleaner restrooms and have toilet paper
- Take better care of the hoops
- Improve waterwheel

- Clean the dog poop in Marina
- More clean- up. Cruise for trash on beach.
- Have cleaners cleaned the rain gardens recently?
- Higher docks, cleaner parks, plant more flowers, repaint buildings, new basketball
- Make all parks look nicer
- Water grass

General Comments:

More things to do at the parks

Less goose poop

More trash cans

All parks in good condition

Better equipment for kids to play on

Need a dog friendly park

Make parks more pretty. More people would go to the parks if they were aesthetically pleasing

Vending machines, changing rooms and more bathrooms

Skate park, water park

An actual playground

A gaga pit

More outdoor sports fields

More attractions

Improve bathrooms

Lastly, the respondents were asked what improvements would you like to see at parks you don't visit often? Please identify the park (or parks) and the improvements you'd like to see.

Never been to any of the parks

A pool in Suttons Bay

Bahle Park-better trail markings

Make the parks more known

Deuster-Add Volleyball and Tennis Courts

VILLAGE OF SUTTONS BAY
PARKS AND RECREATION PLAN
TIMETABLE OF ADOPTION

- August 10th, 2022 planning commission finalized draft plan.
- September 1, 2022 Newspaper publication of plan availability for review beginning o September 1, 2022. Also included notification of the planning commission public hearing and opportunity for comment on October 5, 2022.
- September 1, 2022 Draft Plan made available for public review at Village Hall and the Suttons Bay Bingham District Library and on the Village website at www.suttonsbayvillage.org.
- October 5, 2022 at 5:00 p.m., the planning commission holds Public Hearing and recommends that the Village Council adopt the 2022-2026 Parks and Recreation Plan. (See Resolution dated January 11, 2023)
- On November 21, 2022 the Village Council adopted Resolution 1 of 2022 adopting the 2022-2026 Village of Suttons Bay Parks and Recreation Plan.
- On January 11, 2023 the planning commission restated by way of Resolution recommending the 2022-2026 Parks and Recreation Plan for Adoption