



GENERAL SERVICES COMMITTEE

420 N Front St.

Suttons Bay, MI 49682


Tuesday, August 2, 2022 at 8:10 am

There will also be a Zoom link (which can be found on our website at www.suttonsbayvillage.org) for those members of the public wishing to participate via remote attendance.

AGENDA

Call to Order

1. Reports (staff)
 - a. DPW Director Report
2. Public Comments
Please limit remarks to no more than three (3) minutes or less.
3. Committee Business
 - a. VSB Report 2022-44 Street Light Procedures
 - b. VSB Report 2022-46 Managers Report
4. Status Update – Other Committees
 - a. VSB Report 2022-043 Boat Launch Changes
 - b. VSB Report 2022-045 Law Enforcement Contract
5. Public Comments/Written Communication
6. Committee Member Comments
7. Announcements
8. Adjournment

		DEPARTMENT OF PUBLIC WORKS REPORT DPW -2022- 06	
Prepared:	July 27, 2022	Pages:	1 of 4
Meeting:	August 1, 2022	Attachments:	<input checked="" type="checkbox"/>
Subject:	Monthly DPW Updates		

GENERAL SERVICE HIGHLIGHTS

Daily Park maintenance is ongoing, general cleanup of beaches, trash pickup and cleaning of restrooms.

Willow tree was taken down at Marina Beach and another is being trimmed back of dead limbs.

Street signs are being replaced that are faded or Improper sized. Reflective stop signpost markers have been added for better visibility. Speed limit signs are also included with this project.

Sidewalk removal at Lincoln and West has been completed, new concrete and restoration next.

Irrigation at Duester Park was completely rebuilt and updated, placed back in full operation.

North Park center and north overhead masts were repaired including damage to the launch dock in two places.

UTILITY HIGHLIGHTS

Sewer cleaning, pump station, catch basin and manhole inspections village wide are ongoing.

The two buried water valves that were uncovered, need to install water markers and brought to grade.

PFAS sampling round two will take place beginning of August for collections system. Focus will be along Front St. from Dame to Jefferson, Fire Station, 4th St., resample Main LS. Report of findings due on 9/30/2022 to EGLE.

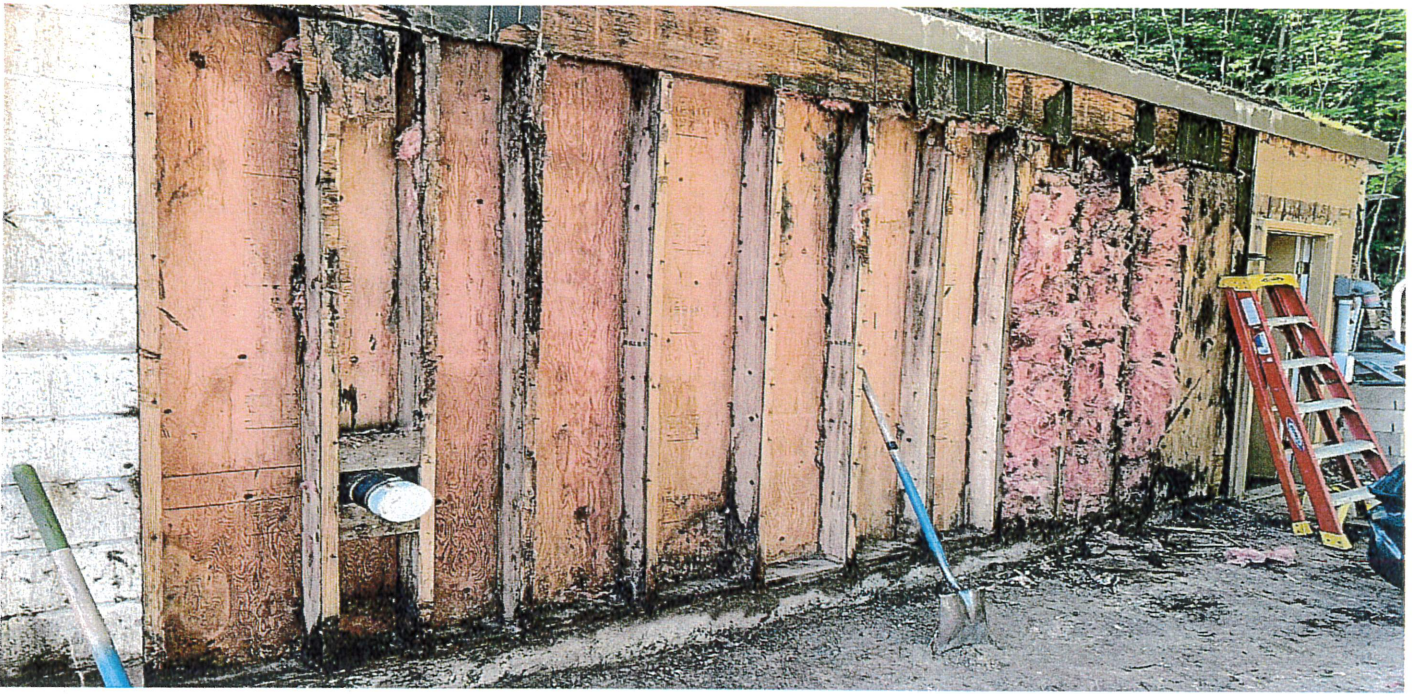
Port Sutton Wellhouse exterior wall was completely rotted and currently being totally reconstructed as seen in the attached pictures. Lou and Paul have initiated repairs to be completed immediately. Water runoff from dirt rooftop infiltrated the only wood wall thru unsealed flashing. It was determined that it was not sealed during construction.

REGULATORY HIGHLIGHTS

Monthly water samples were collected. Test results were reported all clear.



Water damage to exterior wall, mice nests in insulation. Wood completely rotted.




Wall is a total loss, severe damage from runoff infiltrating interior wall.





View of rotten wood wall at the concrete ceiling.

		VILLAGE OF SUTTONS BAY	
		REPORT VSB -2022-44	
Prepared:	June 27, 2022	Pages:	1 of 2
Meeting:	August	Attachments:	<input checked="" type="checkbox"/>
Subject:	Broadway Street Light Evaluation		

PURPOSE

To discuss a streetlight located on Broadway Street.

OVERVIEW

The light in question is located at the intersection of Broadway and Madison Street. According to Leelanau County data, Madison Street was intended to be a through street, however that never materialized leaving the Village with two Madison Street stubs.

Observations

1. A brief observation of the light itself indicates the light is appropriately located at an intersection and the height of the fixture is comparable to other residential lights in the Village.
2. The nearest structure is approximately 60 feet away.
3. The street light is the last light on the circuit; therefore, the cost would likely be minimal should it be removed.
4. The light is mounted to a power pole rather than being a standalone fixture, therefore, the cost to remove the light would be minimal in comparison to removal of a standalone light fixture.
5. The light fixture appears to utilize a high-pressure sodium bulb, which is intended to spread light at a high intensity in all directions.
6. The fixture has what appears to be spray-paint on the interior of the fixture to shield the light.
 - a. This may be some type of actual shield however neither are adequate by today's standards.
 - b. This fixture has not been upgraded although others, including the light directly to the east have.

You may recall that Consumers Energy initiated a program intended to replace all antiquated lights with LED fixtures. Should the committee want to address the light trespass concern then the light fixture should first be replaced with a new LED lamp. However, if the concern is that a light exists, then removal should be discussed.

STAFF COMMENT

If, it has been determined that safety is not a factor, we then shift focus to the physical nature of the light itself. This report touches on the physical aspects of the light, including location, height, light direction, and type of fixture, but excluding light temperature, color and other more in-depth factors.

The Committee may want to consider requiring a petition that clearly identifies a neighborhood desire to improve the light or remove the light. The petition would then be filed and the request would be

COMMITTEE

documented appropriately. I do not believe any additional Staff time should be dedicated to this subject, rather a course of action / recommendation should be provided.

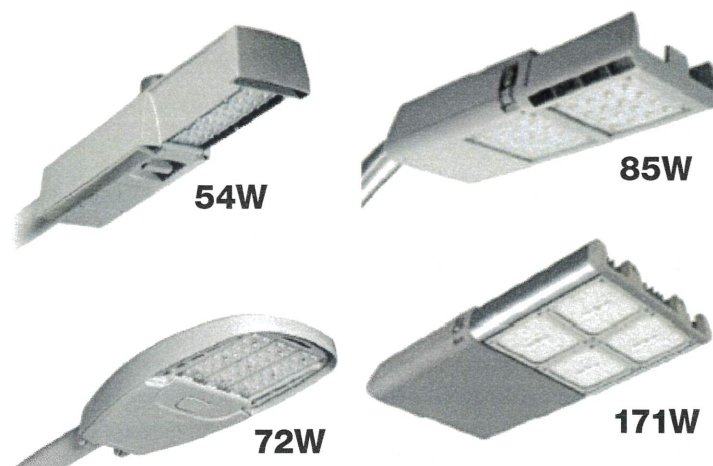
ACTION REQUESTED

The committee should consider the following and /or another option it feels appropriate:

1. Require a petition.
2. Replace the lamp with an LED head.
3. Hire a firm to evaluate all street lights and draft a procedure
4. Remove the light.

WHAT LED STREETLIGHT TO CHOOSE?

When traditional cobra lights fail, Consumers Energy converts the lights into LED models that use less energy and enhance safety with better lighting. We're happy to help you decide which best suits your community's needs. Be sure to consider impacts to local businesses, community safety and emergency responders when making your selections. Although Consumers Energy will work closely with you on deciding what is best for your community, the final decision is ultimately up to your municipality. After evaluating your options, contact us at 800-805-0490 to get started.



CURRENT LED COBRA HEAD OPTIONS

All options have a color temperature of 4000K (color of the moon) and have a rating of zero uplight.

ADDITIONAL PRODUCTS AND SERVICE CONSIDERATIONS:

In all cases, consider the impact each choice may have on local businesses, police and fire departments and other community members that may rely on this lighting. Comments or opinions on the location and necessity of any streetlight should be directed to the local government.

Free Adjustments:

1) Different shielding styles can help reduce unwanted light

- There are different types of shields that may reduce the light in specific directions.
- Please note, applying shielding may not solve the issue. Other options listed in this document either applied alone or collectively may be better suited to meet your needs. The current shielding options are on the back.

2) Repositioning of lights at their existing location

- Realigning streetlights at the existing location may be done for many reasons. If the streetlight is tilted, rotated, or otherwise not perpendicular to the road surface, it may cause the light to illuminate unintended areas.

Additional Fees Apply:

1) Light relocation

- If the streetlight is no longer in an optimal location based on current surroundings, you may consider relocation nearby. This may require installation of a new pole.

2) Replace lights with lower wattage

- If the existing streetlight is of a higher wattage, it may be best to use a lesser wattage light if available. Currently, our lowest wattage LED Cobra head is 54W.

3) Remove/replace Consumers Energy owned lights with locally owned options

- If our streetlighting is replaced with customer owned streetlighting, you/the customer must furnish, install and maintain the unmetered LED lighting system equipment, including but not limited to poles, overhead wires or underground cables between and supply circuits extending to attachment with Consumers Energy lines.

4) Temporary light disconnection

- The lights must be disconnected for a minimum of six months to receive a discounted rate of 40 percent of the monthly charges.
- There is an \$8 disconnect/reconnect fee.

54W LED COBRA HEAD STREETLIGHT SHIELD OPTIONS

Shielding prevents light illumination of unwanted areas. A 360-degree shield is also available to reduce light in all directions

CSS - Cul-de-sac shield



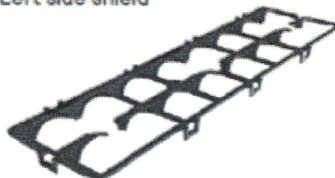
Reduces light in all directions except for in front of the streetlight

FSS - Front side shield



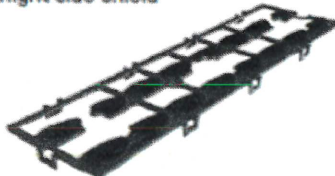
Reduces light in front of streetlight

LSS - Left side shield



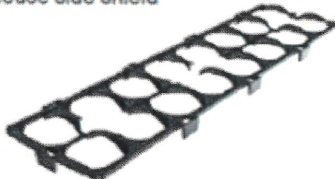
Reduces light on the left side of the streetlight

RSS - Right side shield



Reduces light on the right side of the streetlight

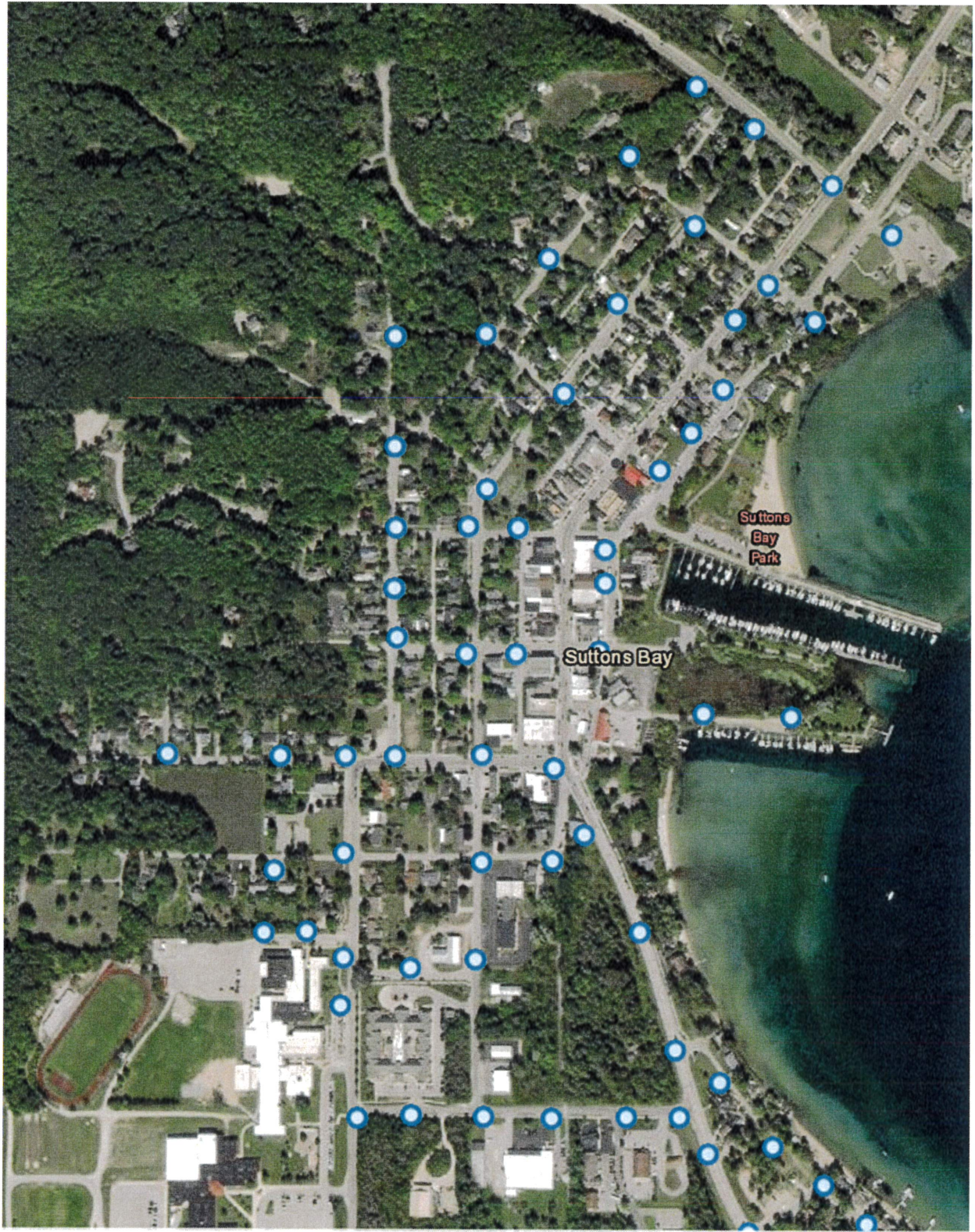
HS - House side shield




Reduces light behind the streetlight



SHIELD LIGHT CASTING EXAMPLES



		VILLAGE OF SUTTONS BAY	
		REPORT VSB -2022-46	
Prepared:	July 27, 2022	Pages:	1 of 1
Meeting:	August Committee Mtgs	Attachments:	<input type="checkbox"/>
Subject:	Manager Update		

SHORT TERM RENTAL ORDINANCE

A **study** on the Short Term Rental Ordinance is underway. Those who have expressed interest in passing to add another committee to their schedule were Roger, Colleen and Debra. Should these council members still be available to help work through the challenges and guide Staff appropriately, I would ask that a STR group be formed.

MARINA BEACH TREE REMOVAL

We lost two willow trees last week due to age and condition. One tree fell due to old age and destroyed the roots from the "sister tree." When the sister tree was removed it was clear that it was in far worst condition than the fallen tree. Both showed significant and somewhat disturbing rot in their trunks which is likely a condition the rest are experiencing. The arborist who made two visits during this time period has suggested planting maples rather than willows.

WATERWHEEL PARK

A **scan** of the waterwheel and an aerial topographic map are underway. A drone was used to accurately obtain elevations so temporary stream re-routing can be evaluated.

The rocks for a new rock circle have been purchased and will be installed at **Waterwheel Park** in the coming weeks. The circle is intended to be used for poetry and book readings, playing instruments, group painting, cultural learning etc.

WATERWHEEL WEDGE PARK

Flat rocks have been purchased and will be placed along the stream for those wanting to enjoy a seat **along the creek**. Installation will occur in the coming weeks.

SIDEWALKS

The DPW crew, along with a rented piece of equipment have removed approximately 1,200 feet of sidewalk along Lincoln/West Street. We are now moving forward with both **phase 1 & phase 2** of the project with the hope of finishing the project in 2023.